

 **BOEING**
COMPONENT
MAINTENANCE MANUAL

TO: ALL HOLDERS OF FORWARD ENTRY AND SERVICE DOOR TRACK ASSEMBLY COMPONENT
MAINTENANCE MANUAL 52-11-86

REVISION NO. 3 DATED DEC 01/95

HIGHLIGHTS

Pages which have been added or revised are outlined below together with the highlights of the revision. Remove and insert the affected pages as listed and enter Revision No. and date on the Record of Revision Sheet.

CHAPTER/SECTION

AND PAGE NO.

DESCRIPTION OF CHANGE

TITLE PAGE

Added assembly 141T6105-65 with support 141T6105-63.

1

301

REPAIR 6-1

601

701

1004-1010,1014,

1017-1027

1039,1041

Added attaching parts for lower support.

52-11-86

HIGHLIGHTS

01.1

Page 1

Dec 01/95

FORWARD ENTRY AND SERVICE DOOR TRACK ASSEMBLY

PART NUMBERS 141T6105-3,-4,-45,
-49 THRU -51,-65

COMPONENT MAINTENANCE MANUAL
WITH
ILLUSTRATED PARTS LIST

52-11-86

TITLE PAGE

Page 1

Dec 01/95

01.1



REVISION RECORD

- Retain this record in front of manual. On receipt of revision, insert revised pages in the manual, and enter revision number, date inserted and initial.

REVISION NUMBER	REVISION DATE	DATE FILED	BY	REVISION NUMBER	REVISION DATE	DATE FILED	BY



TEMPORARY REVISION AND SERVICE BULLETIN RECORD

BOEING SERVICE BULLETIN	BOEING TEMPORARY REVISION	OTHER DIRECTIVE	DATE OF INCORPORATION INTO MANUAL

52-11-86

TR & SB RECORD

01

Page 1

Oct 10/84


BOEING
 COMPONENT
 MAINTENANCE MANUAL

PAGE	DATE	CODE	PAGE	DATE	CODE
52-11-86			REPAIR 1-1		
			601	OCT 10/84	01
			602	OCT 10/84	01
TITLE PAGE			REPAIR 2-1		
*1	DEC 01/95	01.1	601	OCT 10/84	01
2	BLANK		602	OCT 10/84	01
REVISION RECORD			REPAIR 3-1		
1	OCT 10/84	01	601	OCT 10/84	01
2	BLANK		602	OCT 10/84	01
TR & SB RECORD			REPAIR 4-1		
1	OCT 10/84	01	601	JAN 10/86	01.1
2	BLANK		602	BLANK	
LIST OF EFFECTIVE PAGES			REPAIR 5-1		
*1	DEC 01/95	01	601	OCT 10/84	01
THRU LAST PAGE			602	BLANK	
CONTENTS			REPAIR 6-1		
1	OCT 10/84	01	*601	DEC 01/95	01.1
2	BLANK		602	OCT 10/84	01
INTRODUCTION			ASSEMBLY		
1	JUL 10/85	01.1	*701	DEC 01/95	01.1
2	BLANK		702	OCT 10/84	01
DESCRIPTION & OPERATION			703	OCT 10/84	01
1	OCT 10/84	01	704	OCT 10/84	01
2	BLANK		705	OCT 10/84	01
DISASSEMBLY			706	OCT 10/84	01
*301	DEC 01/95	01.1	707	OCT 10/84	01
302	OCT 10/84	01	708	BLANK	
CHECK			ILLUSTRATED PARTS LIST		
501	OCT 10/84	01	1001	OCT 10/84	01
502	BLANK		1002	OCT 10/84	01
REPAIR-GENERAL			1003	OCT 10/84	01
601	OCT 10/84	01	*1004	DEC 01/95	01.1
602	OCT 10/84	01	*1005	DEC 01/95	01.1
			*1006	DEC 01/95	01.1
			*1007	DEC 01/95	01.1
			*1008	DEC 01/95	01.1

* = REVISED, ADDED OR DELETED

52-11-86

EFFECTIVE PAGES
CONTINUED Page 1
01 Dec 01/95

PAGE	DATE	CODE	PAGE	DATE	CODE
ILLUSTRATED PARTS LIST		CONT.			
*1009	DEC 01/95	01.1			
*1010	DEC 01/95	01.1			
1011	BLANK				
*1012	DEC 01/95	01.1			
*1013	DEC 01/95	01.1			
*1014	DEC 01/95	01.1			
*1015	DEC 01/95	01.1			
*1016	DEC 01/95	01.1			
*1017	DEC 01/95	01.1			
*1018	DEC 01/95	01.1			
*1019	DEC 01/95	01.1			
*1020	DEC 01/95	01.1			
*1021	DEC 01/95	01.1			
*1022	DEC 01/95	01.1			
*1023	DEC 01/95	01.1			
*1024	DEC 01/95	01.1			
*1025	DEC 01/95	01.1			
*1026	DEC 01/95	01.1			
*1027	DEC 01/95	01.1			
*1028	DEC 01/95	01.1			
*1029	DEC 01/95	01.1			
*1030	DEC 01/95	01.1			
*1031	DEC 01/95	01.1			
*1032	DEC 01/95	01.1			
1033	OCT 10/84	01			
1034	OCT 10/84	01			
1035	OCT 10/84	01			
1036	OCT 10/84	01			
1037	OCT 10/84	01			
1038	OCT 10/84	01			
*1039	DEC 01/95	01.1			
1040	APR 10/86	01.101			
*1041	DEC 01/95	01.1			
1042	BLANK				

* = REVISED, ADDED OR DELETED

52-11-86

EFFECTIVE PAGES
 LAST PAGE Page 2
 01 Dec 01/95



TABLE OF CONTENTS

<u>Paragraph Title</u>	<u>Page</u>
Description and Operation	1
Testing/Trouble Shooting (not applicable)	
Disassembly	301
Cleaning. * [1]	
Check	501
Repair.	601
Assembly.	701
Fits and Clearances (not applicable)	
Special Tools (not applicable)	
Illustrated Parts List.	1001

* [1] Special instructions not required. Use standard industry practices.

52-11-86

01
CONTENTS
Page 1
Oct 10/84



INTRODUCTION

The instructions in this manual provide the information necessary to perform maintenance functions ranging from simple checks and replacement to complete shop-type repair.

This manual is divided into separate sections:

- | | |
|--|------------------------------|
| 1. Title Page | 4. List of Effective Pages |
| 2. Record of Revisions | 5. Table of Contents |
| 3. Temporary Revision &
Service Bulletin Record | 6. Introduction |
| | 7. Procedures & IPL Sections |

Refer to the Table of Contents for the page location of applicable sections. An asterisked flagnote *[] in place of the page number indicates that no special instructions are provided since the function can be performed using standard industry practices.

The beginning of the REPAIR section includes a list of the separate repairs, a list of applicable standard Boeing practices, and an explanation of the True Position Dimensioning symbols used.

An explanation of the use of the Illustrated Parts List is provided in the Introduction to that section.

All weights and measurements used in the manual are in English units, unless otherwise stated. When metric equivalents are given they will be in parentheses following the English units.

Design changes, optional parts, configuration differences and Service Bulletin modifications create alternate part numbers. These are identified in the Illustrated Parts List (IPL) by adding an alphabetical character to the basic item number. The resulting item number is called an alpha-variant. Throughout the manual, IPL basic item number references also apply to alpha-variants unless otherwise indicated.

Verification:

Disassembly	Feb 4/85
Assembly	Feb 4/85

52-11-86

INTRODUCTION

01.1

Page 1

Jul 10/85



FORWARD ENTRY AND SERVICE DOOR TRACK ASSEMBLY

DESCRIPTION AND OPERATION

1. The upper forward entry and service door track assembly provides oval tracks for a door trolley to ride in. The track assembly consists of track sections, splice sections, stringers, latch cam assembly and brackets.

52-11-86

DESCRIPTION & OPERATION

01

Page 1

Oct 10/84

DISASSEMBLY

NOTE: Disassemble this component only as necessary to complete fault isolation, determine the serviceability of parts, perform required repairs, and restore the unit to serviceable condition.

1. Disassembly (IPL Fig. 1)

- A. Remove nuts (360), washers (355), bolts (370), shims (360) and lower support bracket (350).
 - B. Remove collars (260), lockbolts (255), filler (265) and brackets (270, 275) from track assemblies (280, 295).
 - C. Remove nuts (145), washers (140), bolts (135) bearing retainers (150), bearings (155) and cam latch assembly (160, 205).
 - D. Remove collars (335), lockbolts (320), fillers (325, 330), and bracket (345) from tracks (70, 75).
 - E. Remove collars (215, 235), lockbolts (210, 230), brackets (220, 225), and angle (240) from track assemblies.
 - F. Remove collars (105), lockbolts (90, 95, 100) and splice (125, 130) from tracks (70, 75) and track assemblies (280, 295).
 - G. Remove collars (115, 107), lockbolts (110, 102) and stringer (120) from splice (125, 130).
- NOTE: Do not remove stringers (25, 30) from tracks (70, 75) unless repair or replacement is necessary.
- H. Remove nut (185), washer (175), shim (180), and bolts (165, 170) and separate the trolley stop (190, 195) from cam latch (200).

2. Disassembly (IPL Fig. 2)

- A. Remove nuts (320), washers (315), bolts (310), shims (325) and lower support bracket (207).
- B. Remove collars (220), lockbolts (215), filler (225) and brackets (230, 235) from track assemblies (240, 255).
- C. Remove nuts (110), washers (105), bolts (100), bearing retainers (115), bearing (120) and cam latch (125, 170).

52-11-86

DISASSEMBLY

01.1

Page 301

Dec 01/95

- D. Remove collars (295), lockbolts (280), fillers (285, 290), and bracket (305) from tracks (35, 40).
- E. Remove collars (180, 200), lockbolts (175, 195), brackets (185, 190), and angle (205) from track assemblies.
- F. Remove collars (70), lockbolts (55, 60, 65), and splice (90, 95) from tracks (35, 40) and track assemblies (240, 255).
- G. Remove collars (72, 80), lockbolts (67, 75) and stringer (85) from splice (90, 95).

NOTE: Do not remove stringers (25, 30) from tracks (35, 40) unless repair or replacement is necessary.

- H. Remove nut (150), washer (140), shim (145), and bolts (130, 135) and separate the trolley stop (155, 160) from cam latch (165).

52-11-86

DISASSEMBLY

01

Page 302

Oct 10/84



CHECK

1. Check all parts for obvious defects in accordance with standard industry practices.
2. Magnetic particle check the following parts per 20-20-01.
 - A. Cam - Latch (205, IPL Fig. 1)
 - B. Cam - Latch (170, IPL Fig. 2)
 - C. Stop - Trolley (190, 195, IPL Fig. 1)
 - D. Stop - Trolley (150, 160, IPL Fig. 2)
3. Penetrant check the following parts per 20-20-02.
 - A. Track (290, 310, IPL Fig. 1)
 - B. Track (250, 270, IPL Fig. 2)
 - C. Bracket (345, IPL Fig. 1)
 - D. Bracket (305, IPL Fig. 2)

52-11-86

01
CHECK
Page 501
Oct 10/84

REPAIR – GENERAL1. Content

- A. Repair, refinish and replacement procedures are included in separate sections as follows:

<u>P/N</u>	<u>NAME</u>	<u>REPAIR</u>
141T6236	TRACK	1-1
141T6237	TRACK	2-1
141T6180	CAM-LATCH	3-1
141T6593	BRACKET	4-1
141T6105	TRACK	5-1
- - -	MISC PARTS REFINISH	6-1

2. Standard Practices

- A. Refer to the following standard practices as applicable, for details of procedures in individual repairs.

20-50-03 Bearing Retention and Installation
 20-30-02 Stripping of Protective Finishes
 20-41-01 Decoding Table for Boeing Finish Codes
 20-41-02 Application of Chemical and Solvent Resistant Finishes
 20-43-01 Chromic Acid Anodizing

3. Materials

NOTE: Equivalent substitutes may be used.

- A. Primer -- BMS 10-11, type 1 (Ref 20-60-02)
 B. Sealant -- BMS 5-95 (Ref 20-60-04)
 C. Enamel -- BMS 10-11, type II gloss white (Ref 20-60-02)

52-11-86

REPAIR-GENERAL

01

Page 601

Oct 10/84

4. Dimensioning Symbols

A. Standard True Position Dimensioning Symbols used in applicable repair procedures are shown in Fig. 601.

—	STRAIGHTNESS	\oplus	THEORETICAL EXACT POSITION OF A FEATURE (TRUE POSITION)
\square	FLATNESS	\varnothing	DIAMETER
\perp	PERPENDICULARITY (OR SQUARENESS)	BASIC (BSC) OR	A THEORETICALLY EXACT DIMENSION USED TO DESCRIBE SIZE, SHAPE OR LOCATION OF A FEATURE FROM WHICH PERMISSIBLE VARIATIONS ARE ESTABLISHED BY TOLERANCES ON OTHER DIMENSIONS OR NOTES.
//	PARALLELISM	DIM	
\bigcirc	ROUNDNESS	-A-	DATUM
\bigcirc	CYLINDRICITY	\textcircled{M}	MAXIMUM MATERIAL CONDITION (MMC)
\frown	PROFILE OF A LINE	\textcircled{S}	REGARDLESS OF FEATURE SIZE (RFS)
\triangle	PROFILE OF A SURFACE	\textcircled{P}	PROJECTED TOLERANCE ZONE
\odot	CONCENTRICITY		
\equiv	SYMMETRY		
\sphericalangle	ANGULARITY		
\nearrow	RUNOUT		

EXAMPLES

$\text{—} \quad 0.002$	STRAIGHT WITHIN 0.002	$\textcircled{\odot} \text{ C } \varnothing \quad 0.0005$	CONCENTRIC TO C WITHIN 0.0005 DIAMETER (FULL INDICATOR MOVEMENT)
$\perp \text{ B } \quad 0.002$	PERPENDICULAR TO B WITHIN 0.002	$\equiv \text{ A } \quad 0.010$	SYMMETRICAL WITH A WITHIN 0.010
$\parallel \text{ A } \quad 0.002$	PARALLEL TO A WITHIN 0.002	$\sphericalangle \text{ A } \quad 0.005$	ANGULAR TOLERANCE 0.005 WITH A
$\bigcirc \quad 0.002$	ROUND WITHIN 0.002	$\oplus \text{ B } \varnothing \quad 0.002 \textcircled{S}$	LOCATED AT TRUE POSITION WITHIN 0.002 DIA IN RELATION TO DATUM B, REGARDLESS OF FEATURE SIZE
$\bigcirc \quad 0.010$	CYLINDRICAL SURFACE MUST LIE BETWEEN TWO CONCENTRIC CYLINDERS, ONE OF WHICH HAS A RADIUS 0.010 INCH GREATER THAN THE OTHER	$\perp \text{ A } \varnothing \quad 0.010 \textcircled{M}$ $0.510 \textcircled{P}$	AXIS IS TOTALLY WITHIN A CYLINDER OF 0.010-INCH DIAMETER, PERPENDICULAR TO, AND EXTENDING 0.510-INCH ABOVE, DATUM A, MAXIMUM MATERIAL CONDITION
$\frown \text{ A } \quad 0.006$	EACH LINE ELEMENT OF THE SURFACE AT ANY CROSS SECTION MUST LIE BETWEEN TWO PROFILE BOUNDARIES 0.006 INCH APART IN RELATION TO DATUM PLANE A	2.000	EXACT DIMENSION IS 2.000
$\triangle \text{ A } \quad 0.020$	SURFACES MUST LIE WITHIN PARALLEL BOUNDARIES 0.02 INCH APART AND EQUALLY DISPOSED ABOUT TRUE PROFILE	OR 2.000 BSC	

True Position Dimensioning Symbols
Figure 601

52-11-86

REPAIR-GENERAL

01 Page 602

Oct 10/84

TRACK ASSEMBLY – REPAIR 1-1

141T6236-3

NOTE: Refer to REPAIR-GEN for list of applicable standard practices. For repair of surfaces which may only require stripping and restoration of original finish, refer to REFINISH instruction, Fig. 601.

1. Bushing Replacement (IPL Fig. 1, Fig. 601)

- A. Remove bushings (285).
- B. Install new bushing per 20-50-03 except use wet BMS 5-95 sealant.
- C. Machine bushings to dimensions shown.
- D. Fillet seal bushings with BMS 5-95 sealant.

2. Bushing Replacement (IPL Fig. 2, Fig. 601)

- A. Remove bushings (245).
- B. Install new bushing per 20-50-03 except use wet BMS 5-95 sealant.
- C. Machine bushings to dimensions shown.
- D. Fillet seal bushings with BMS 5-95 sealant.

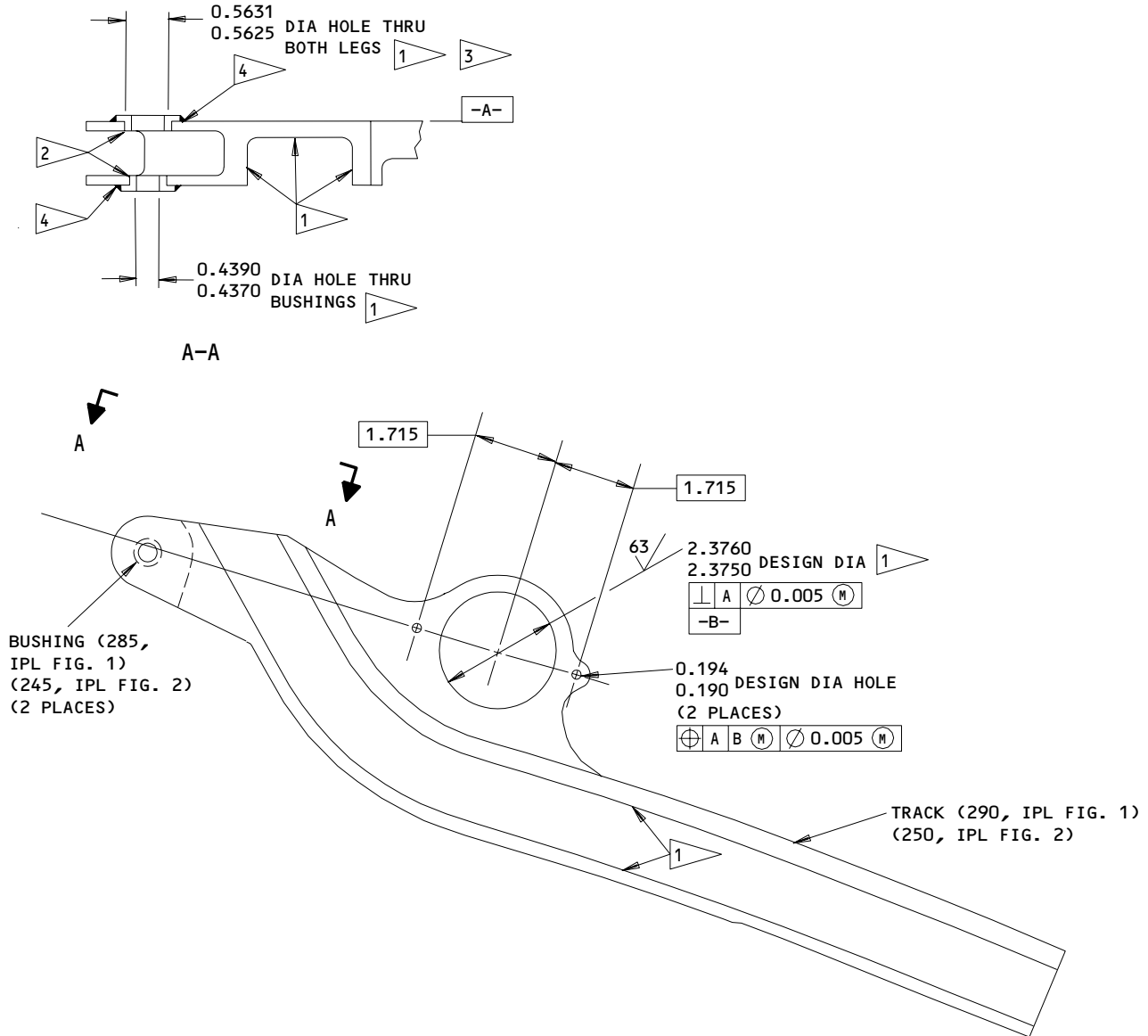
52-11-86

REPAIR 1-1

01

Page 601

Oct 10/84



REFINISH

TRACK (290) -- CHROMIC ACID ANODIZE AND APPLY ONE COAT OF BMS 10-11, TYPE 1 PRIMER (F-18.13) APPLY ONE COAT OF BMS 10-11, TYPE II ENAMEL, BAC702 WHITE GLOSS (F-21.03) EXCEPT AS NOTED.

- 1 NO PRIMER OR ENAMEL ON THIS SURFACE
- 2 CHAMFER HOLE EDGE 0.010 X 45°
0.015
- 3 BREAK BORE EDGE 0.005-0.010
- 4 FILLET SEAL BMS 5-95 SEALANT

MATERIAL: AL ALLOY

ALL DIMENSIONS ARE IN INCHES

141T6236-3
 Track Assembly - Repair
 Figure 601

52-11-86

REPAIR 1-1

Page 602

Oct 10/84

01

TRACK ASSEMBLY – REPAIR 2-1

141T6237-5

NOTE: Refer to REPAIR-GEN for list of applicable standard practices. For repair of surfaces which may only require stripping and restoration of original finish, refer to REFINISH instruction, Fig. 601.

1. Bushing Replacement (IPL Fig. 1, Fig. 601)

- A. Remove bushings (300, 305).
- B. Install new bushing per 20-50-03 except use wet BMS 5-95 sealant.
- C. Machine bushings to dimensions shown.
- D. Fillet seal bushings with BMS 5-95 sealant.

2. Bushing Replacement (IPL Fig. 2, Fig. 601)

- A. Remove bushings (260, 265).
- B. Install new bushing per 20-50-03 except use wet BMS 5-95 sealant.
- C. Machine bushings to dimensions shown.
- D. Fillet seal bushings with BMS 5-95 sealant.

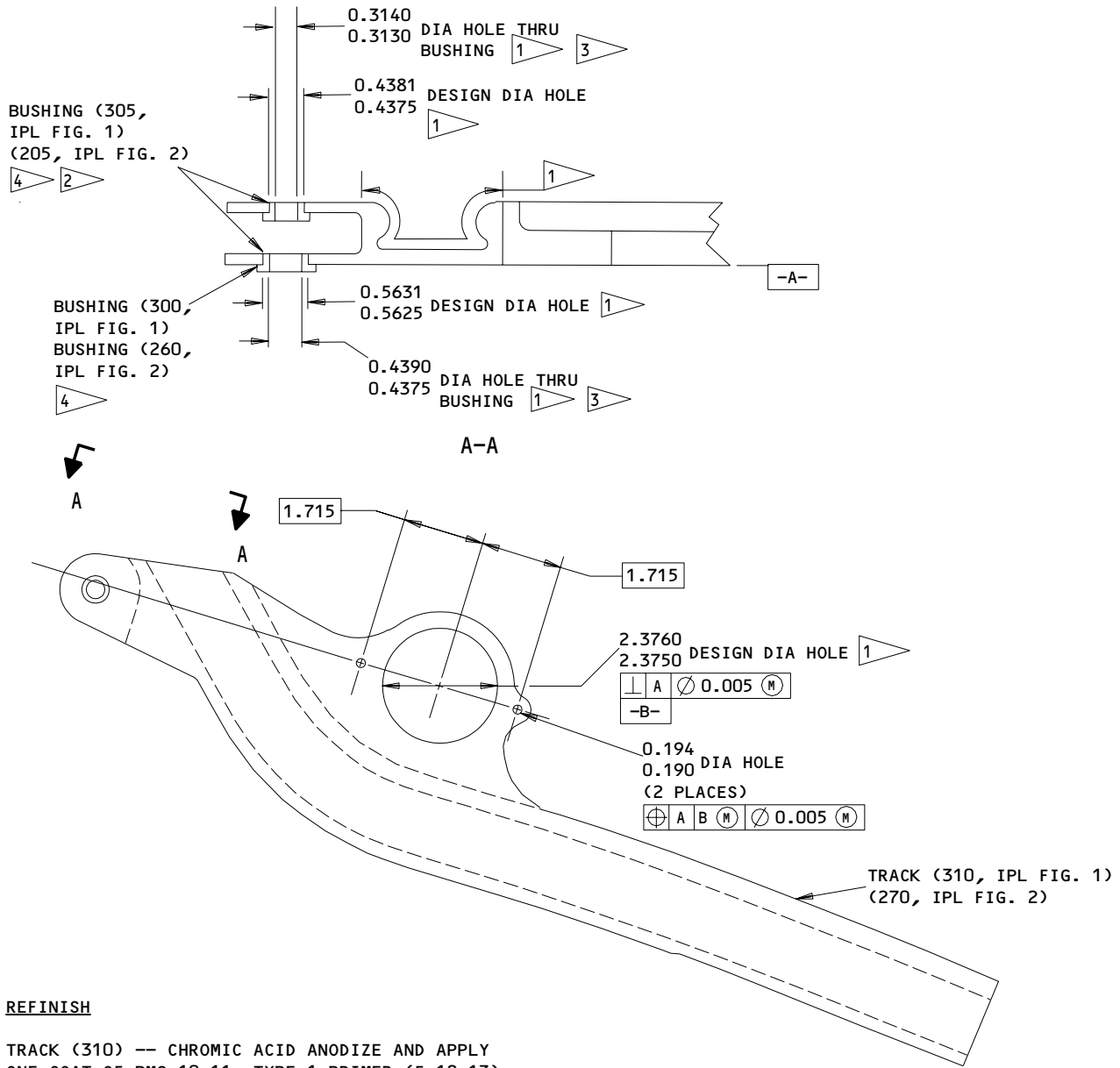
52-11-86

REPAIR 2-1

01

Page 601

Oct 10/84



REFINISH

TRACK (310) -- CHROMIC ACID ANODIZE AND APPLY ONE COAT OF BMS 10-11, TYPE 1 PRIMER (F-18.13). APPLY ONE COAT OF BMS 10-11, TYPE II ENAMEL, BAC702 WHITE GLOSS (F-21.03) EXCEPT AS NOTED.

- 1 NO PRIMER OR ENAMEL ON THIS SURFACE
- 2 CHAMFER HOLE EDGE 0.010 X 45°
0.015
- 3 BREAK BORE EDGE 0.005-0.010
- 4 FILLET SEAL BMS 5-95 SEALANT

MATERIAL: AL ALLOY

ALL DIMENSIONS ARE IN INCHES

141T6237-5
 Track Assembly - Repair
 Figure 601

52-11-86

REPAIR 2-1

Page 602

Oct 10/84

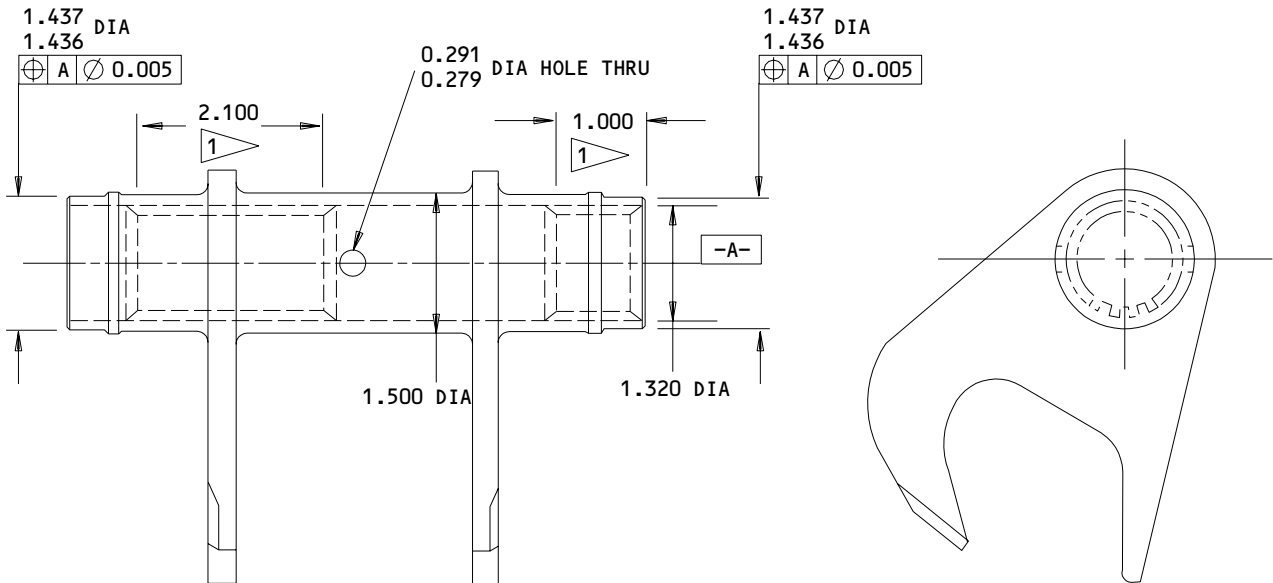
01

CAM-LATCH - REPAIR 3-1

141T6180-3, -4, -8, -9

1. Plating Repair

NOTE: Repair consists of stripping and restoration of original finish. Refer to Refinish instruction in Fig. 601 and to REPAIR-GEN for List of applicable standard practices.



REFINISH

PASSIVATE (F-17.09) EXCEPT AS NOTED. CADMIUM PLATE (0.0002-0.0004 THICK)(F-15.02).

1 DO NOT PASSIVATE BORE AND SPLINES. CADMIUM PLATE SPLINES. OPTIONAL: CADMIUM PLATE ENTIRE LENGTH OF INSIDE DIA.

MATERIAL: 15-5PH CRES 180-200 KSI

ALL DIMENSIONS ARE IN INCHES

141T6180-3,-4
 Cam-Latch Track Entry Door Repair
 Figure 601 (Sheet 1)

143624

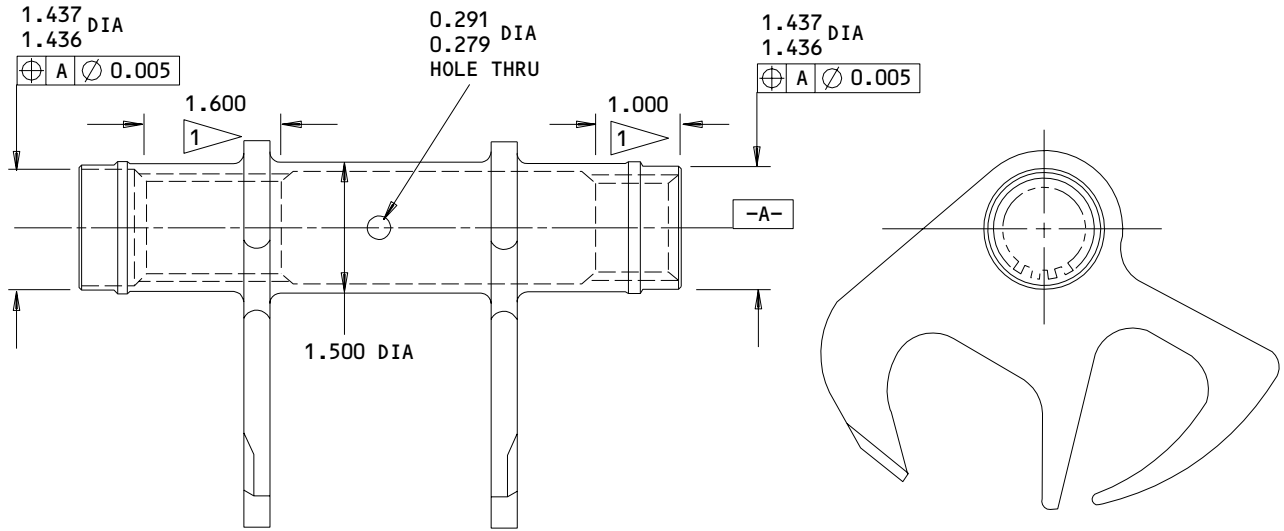
52-11-86

REPAIR 3-1

01

Page 601

Oct 10/84



REFINISH

PASSIVATE (F-17.09) EXCEPT AS NOTED. CADMIUM PLATE (0.0002-0.0004 THICK)(F-15.02).

1 DO NOT PASSIVATE BORE AND SPLINES. CADMIUM PLATE SPLINES. OPTIONAL: CADMIUM PLATE ENTIRE LENGTH OF INSIDE DIA.

MATERIAL: 15-5PH CRES 180-200 KSI

ALL DIMENSIONS ARE IN INCHES

141T6180-8,-9
 Cam-Latch Track Entry Door Repair
 Figure 601 (Sheet 2)

143623

52-11-86

REPAIR 3-1

Page 602

Oct 10/84

01

BRACKET-TRACK SUPPORT - REPAIR 4-1

141T6593-19, -21

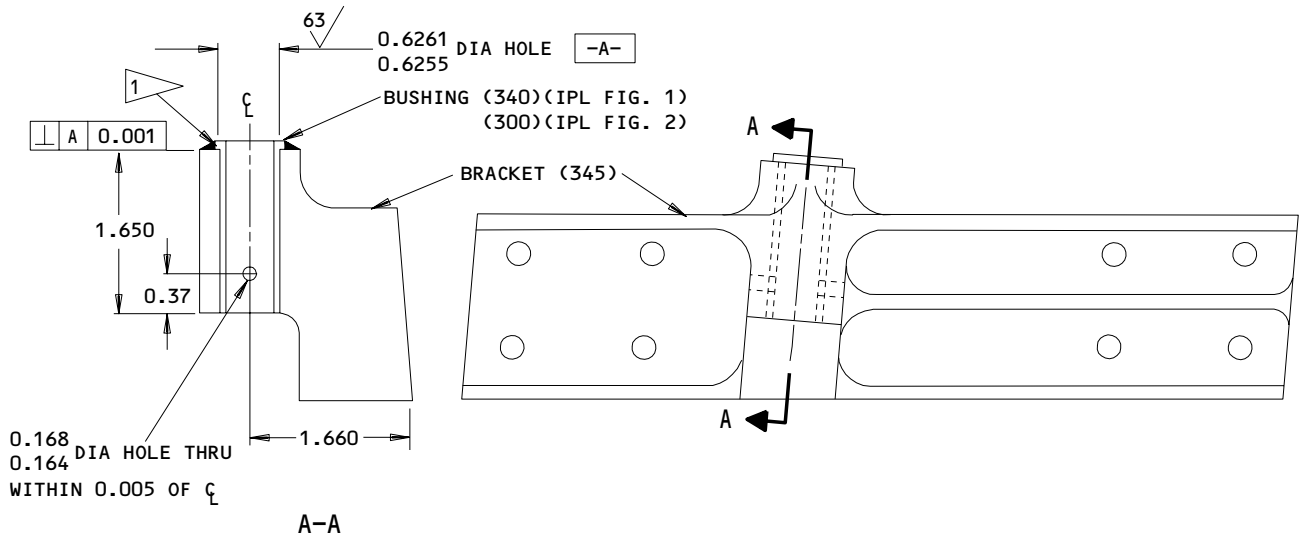
NOTE: Refer to REPAIR-GEN for list of applicable standard practices. For repair of surfaces which may only require stripping and restoration of original finish, refer to REFINISH instruction, Fig. 601.

1. Bushing Replacement (IPL Fig. 1, Fig. 601)

- A. Remove bushing (340).
- B. Install new bushing per 20-50-03 except use wet BMS 5-95 sealant.
- C. Fillet seal bushing flange with sealant.

2. Bushing Replacement (IPL Fig. 2, Fig. 601)

- A. Remove bushing (300).
- B. Install new bushing per 20-50-03 except use wet BMS 5-95 sealant.
- C. Fillet seal bushing flange with sealant.



REFINISH

BRACKET (345) -- CHROMIC ACID ANODIZE AND APPLY ONE COAT OF BMS 10-11, TYPE 1 PRIMER (F-18.13).

MATERIAL: AL ALLOY

ALL DIMENSIONS ARE IN INCHES

1 FILLET SEAL BUSHING FLANGE WITH BMS 5-95 SEALANT

Track Support Bracket Assembly - Repair
 Figure 601

52-11-86

REPAIR 4-1

01.1

Page 601

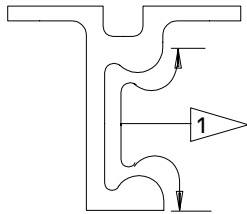
Jan 10/86

TRACK - REPAIR 5-1

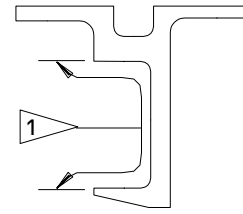
141T6105-33, -35, -37, -39,
 -53, -54, -55, -56

1. Plating Repair

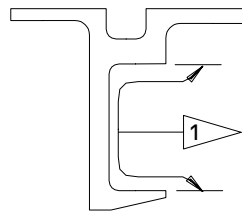
NOTE: Repair consists of stripping and restoration of original finish. Refer to Refinish instruction in Fig. 601 and to REPAIR-GEN for list of applicable standard practices.



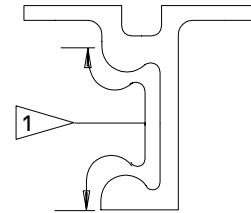
141T6105-33,-53



141T6105-35,-55



141T6105-37,-54



141T6105-39,-56

REFINISH

CHROMIC ACID ANODIZE (F-17.04). APPLY ONE COAT OF BMS 10-11, TYPE 1, PRIMER (F-20.02) EXCEPT AS NOTED.

MATERIAL: AL ALLOY

1 OMIT PRIMER THESE SURFACES FOR FULL LENGTH OF TRACK

Track - Repair
 Figure 601

52-11-86

REPAIR 5-1

01

Page 601

Oct 10/84

MISC PARTS REFINISH - REPAIR 6-1

1. Repair of parts listed in Fig. 601 consists or restoration of the original finish.

IPL FIG. & ITEM	MATERIAL	FINISH
<u>Fig. 1</u> Stringer (25,30, 120)	Al alloy	Chemical treat and apply one coat of BMS 10-11, type 1 primer (F-18.06).
Bracket (60,61)	Al alloy	Chemical treat and apply one coat of BMS 10-11, type 1 primer (F-18.06) Apply one coat of BMS 10-11, type II enamel, color BAC702 white gloss (F-21.03) except serrations.
Splice (125,130)	Al alloy	Chromic acid anodize and apply one coat of BMS 10-11, type 1, primer (F-18.13).
Retainer (150)	Al alloy	Chemical treat and apply one coat of BMS 10-11, type 1, primer (F-18.06).
Trolley stop (190, 195)	15-5 PH CRES 180-200 ksi	Passivate (F-17.09).
Clip (220,225,270, 275)	Al alloy	Chromic acid anodize and apply one coat of BMS 10-11 type 1, primer (F-18.13).
Angle (240)	Al alloy	Chromic acid anodize and apply one coat of BMS 10-11, type 1, primer (F-18.13).
Support (350)	Al alloy	Chromic acid anodize and apply one coat of BMS 10-11 type 1, primer (F-18.13).
Filler (250,265, 325,330)	Al alloy	Chromic acid anodize and apply one coat of BMS 10-11, type 1, primer (F-18.13).

Refinish Details
 Figure 601 (Sheet 1)

52-11-86

REPAIR 6-1

01.1

Page 601

Dec 01/95

IPL FIG. & ITEM	MATERIAL	FINISH
<u>Fig. 2</u>		
Stringer (25,30,85)	Al alloy	Chemical treat and apply one coat of BMS 10-11, type 1, primer, (F-18.06).
Splice (90,95)	Al alloy	Chromic acid anodize and apply one coat of BMS 10-11, type 1, primer (F-18.13).
Retainer (115)	Al alloy	Chemical treat and apply one coat of BMS 10-11, type 1, primer (F-18.06).
Trolley stop (150,160)	15-5 PH CRES 180-200 ksi	Passivate (F-17.09).
Clip (185,190,230,235)	Al alloy	Chromic acid anodize and apply one coat of BMS 10-11 type 1, primer (F-18.13).
Angle (85,205)	Al alloy	Chromic acid anodize and apply one coat of BMS 10-11 type 1, primer (F-18.13).
Support (207)	Al alloy	Chromic acid anodize and apply one coat of BMS 10-11 type 1, primer (F-18.13).
Filler (210,225,325,330)	Al alloy	Chromic acid anodize and apply one coat of BMS 10-11 type 1, primer (F-18.13).

Refinish Details
 Figure 601 (Sheet 2)

52-11-86

REPAIR 6-1

01 Page 602

Oct 10/84

ASSEMBLY1. Assembly (IPL Fig. 1, Fig. 701)

- A. Install stringers (25, 30) to tracks (70, 75) with lock bolts (5, 10) and collars (15, 20).

NOTE: Maintain dimension between outside of tracks as shown on Fig. 701.

- B. Install stringers (120) to splice (125, 130) with lock bolts (110, 102) and collars (115, 107)

NOTE: Maintain dimension between inside of splices as shown on Fig. 701.

- C. Install splice (125, 130) to tracks (70, 75) and track assemblies (280, 295) with lock bolts (90, 95, 100) and collars (105).

- D. Install angle (240) and brackets (220, 225) to track assemblies with lock bolts (210, 230) and collars (215, 235).

- E. Install bracket (345), fillers (325, 330) to tracks (70, 75) with lock bolts (320) and collars (335).

- F. Install trolley stop (190, 195) on latch (200) with bolts (165, 170), washers (175) and nuts (185) per Fig. 703.

- G. Position latch cam assembly (160, 205) between track assemblies (280, 295). Install bearings (155) per 20-50-03, install bearing retainers (150) with bolts (135) washers (140), and nuts (145).

- H. Install brackets (270, 275), filler (265) with lock bolts (255) and collars (260) to tracks (280, 295).

- I. Install lower support brackets (350), shims (365) with bolts (370), washers (355), and nuts (360).

NOTE: Tighten nuts to hold lower support bracket and shims together. Nuts will be tightened during installation.

2. Assembly (IPL Fig. 2, Fig. 702)

- A. Install stringers (25, 30) to tracks (35, 40) with lock bolts (5, 10) and collars (15, 20).

NOTE: Maintain dimension between outside of tracks as shown on Fig. 702.

52-11-86ASSEMBLY
Page 701
Dec 01/95

01.1

- B. Install angle (85) to splice (90, 95) with lock bolt (75, 67) and collars (80, 72).

NOTE: Maintain dimension between inside of splices as shown on Fig. 702.

- C. Install splice (90, 95) to tracks (35, 40) and track assemblies (240, 255) with lock bolts (55, 60, 65) and collars (70).
- D. Install angle (205) and brackets (185, 190) with lock bolts (175, 195) and collars (180, 200).
- E. Install bracket (305), fillers (285, 290) to tracks (35, 40) with lock bolts (280) and collars (295).
- F. Install trolley stop (145, 155) on latch (165) with bolts (130, 135), washers (140), and nuts (150) per Fig. 703.
- G. Position latch cam assembly (125, 170) between track assemblies (240, 255). Install bearings (120) per 20-50-03, install bearing retainers (115) with bolts (100), washers (105) and nuts (110).
- H. Install brackets (230, 235), filler (225) with lock bolts (215) and collars (220) to tracks (240, 255).
- I. Install lower support bracket (207), shims (325) with bolts (310), washer (315) and nut (320).

NOTE: Tighten nuts to hold lower support bracket and shims together. Nuts will be tightened during installation.

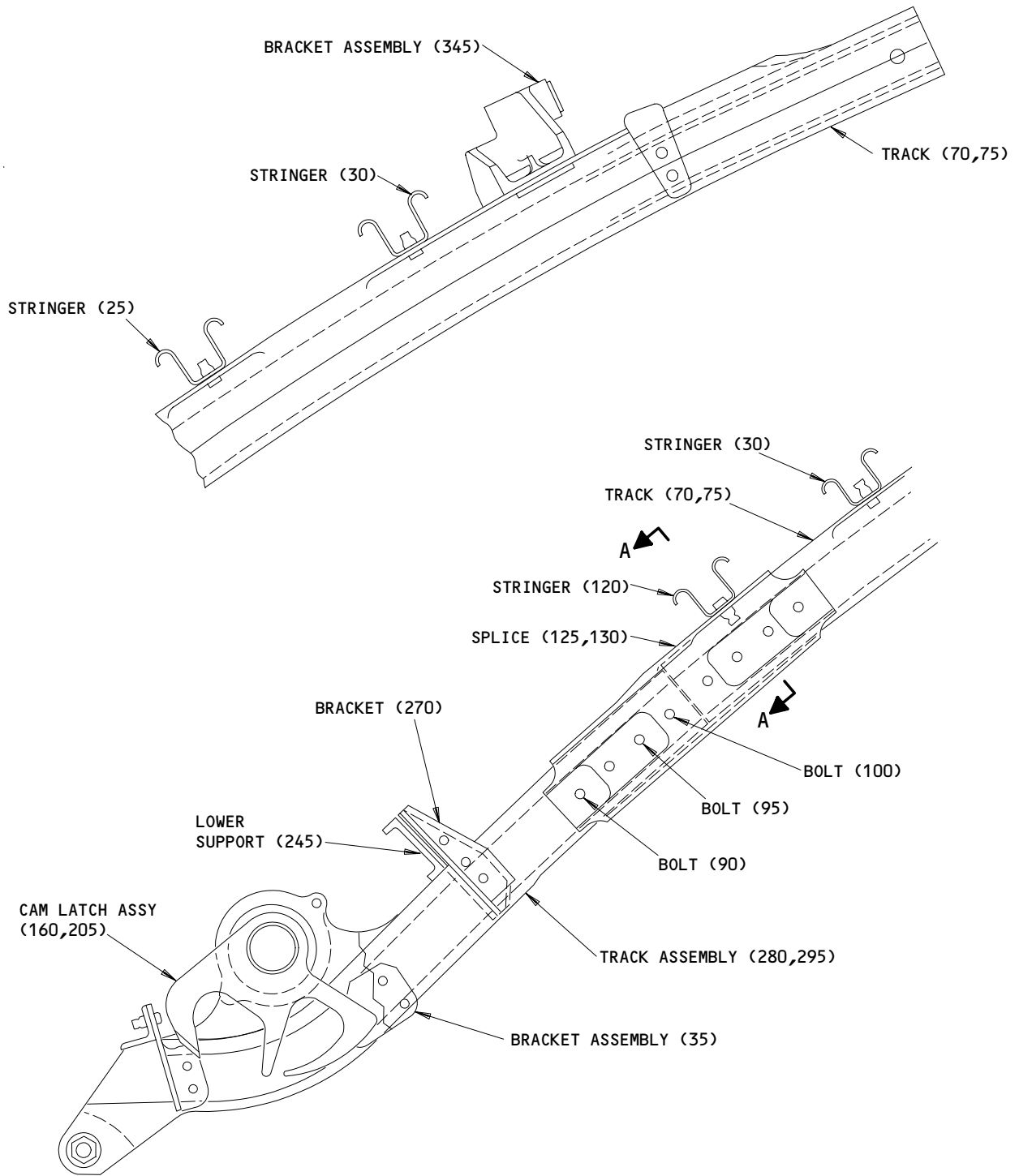
52-11-86

ASSEMBLY

01

Page 702

Oct 10/84



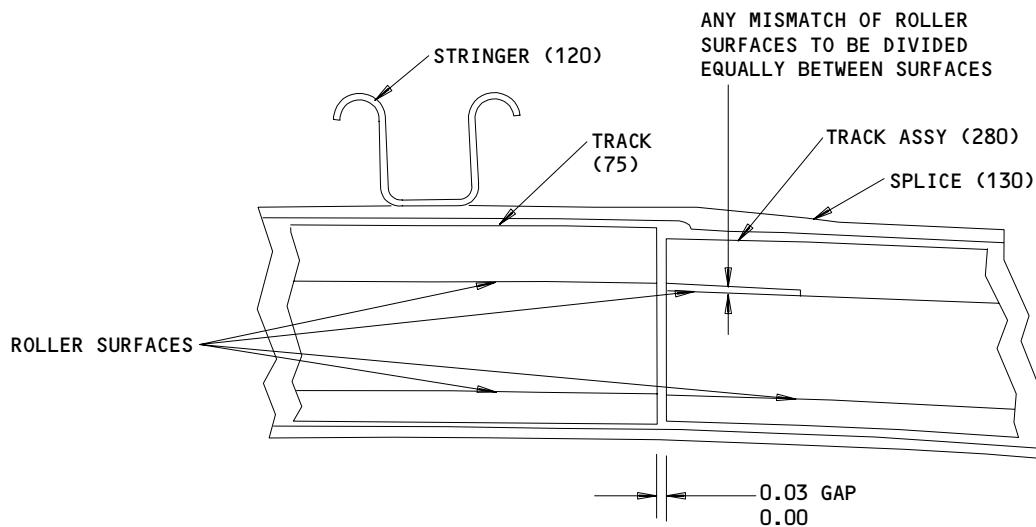
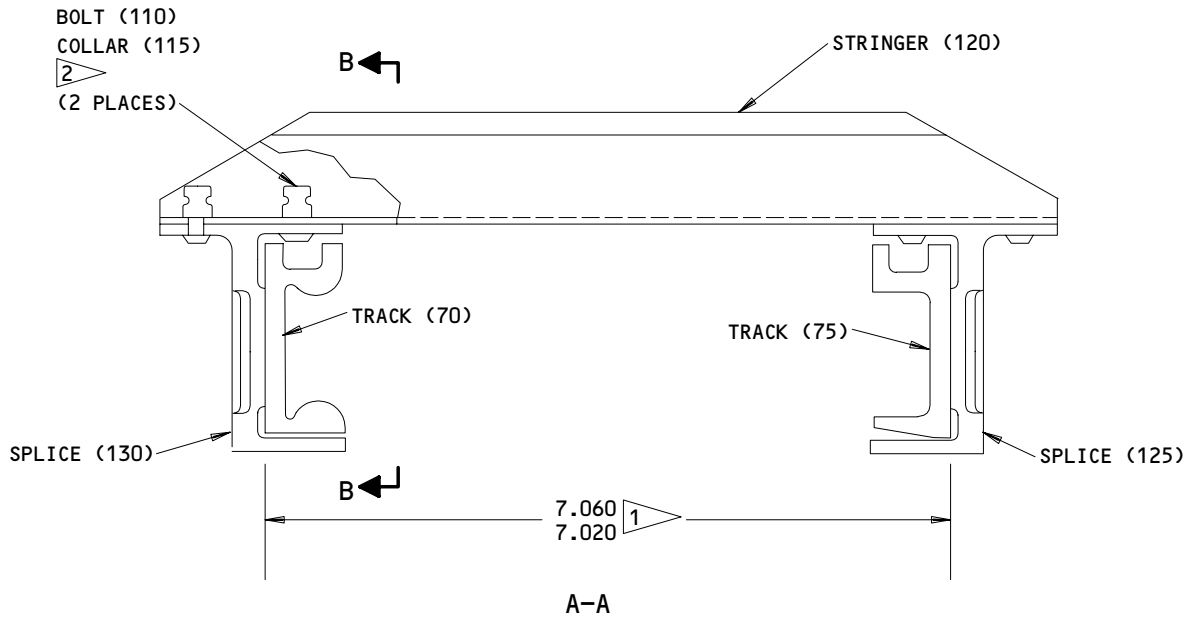
ITEM NUMBERS REFER TO IPL FIG. 1

Assembly
Figure 701 (Sheet 1)

52-11-86

ASSEMBLY
Page 703
Oct 10/84

01



(THIS DETAIL TYPICAL FOR BOTH FWD
 AND AFT TRACKS)

B-B

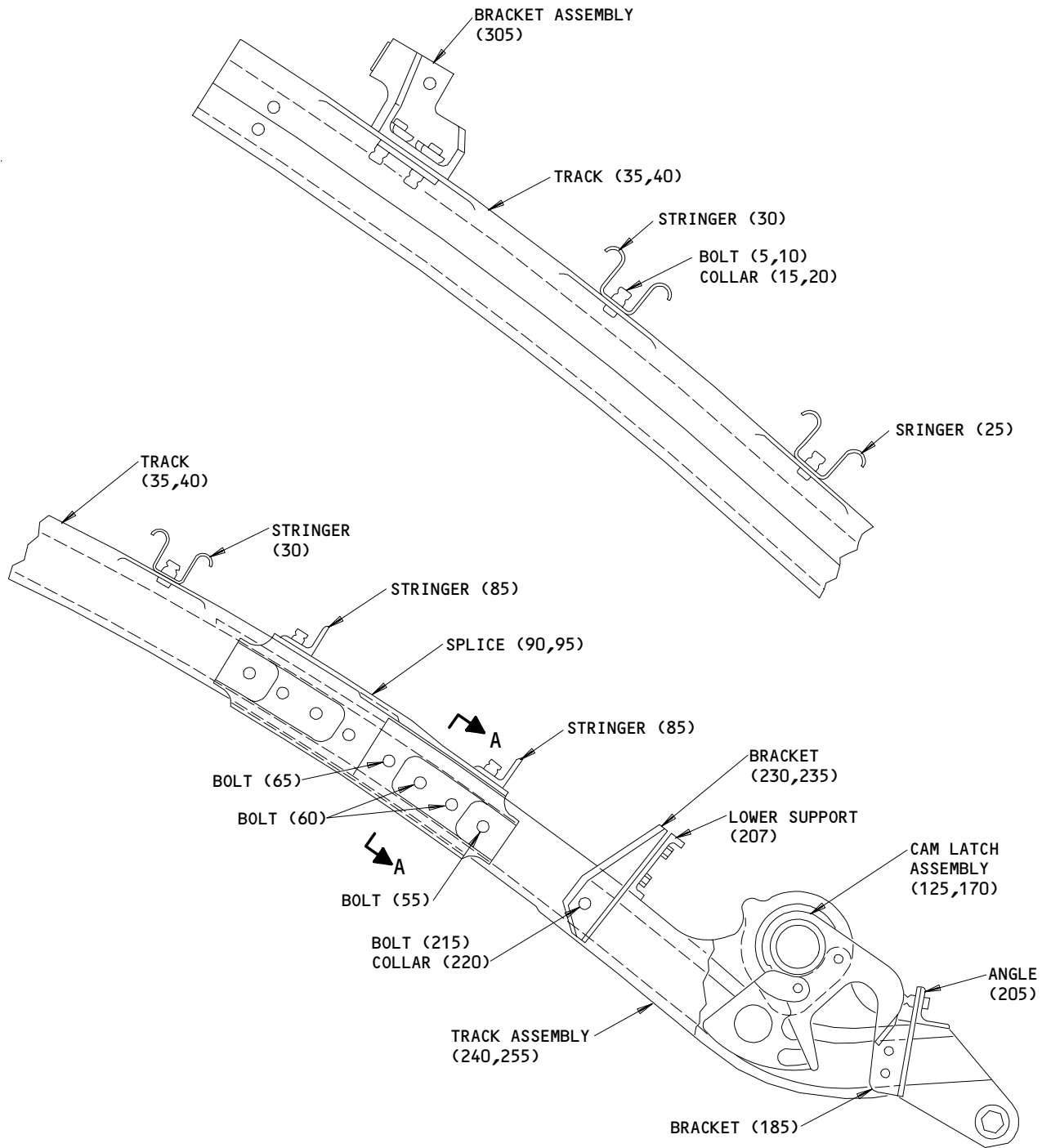
- 1 DIMENSION APPLIES ALONG ENTIRE LENGTH OF TRACK.
- 2 INSTALL PRIOR TO FINAL JOINING OF TRACK ASSEMBLY.

Assembly Details
 Figure 701 (Sheet 2)

52-11-86

ASSEMBLY
 Page 704
 Oct 10/84

01



ITEM NUMBERS REFER TO IPL FIG. 2

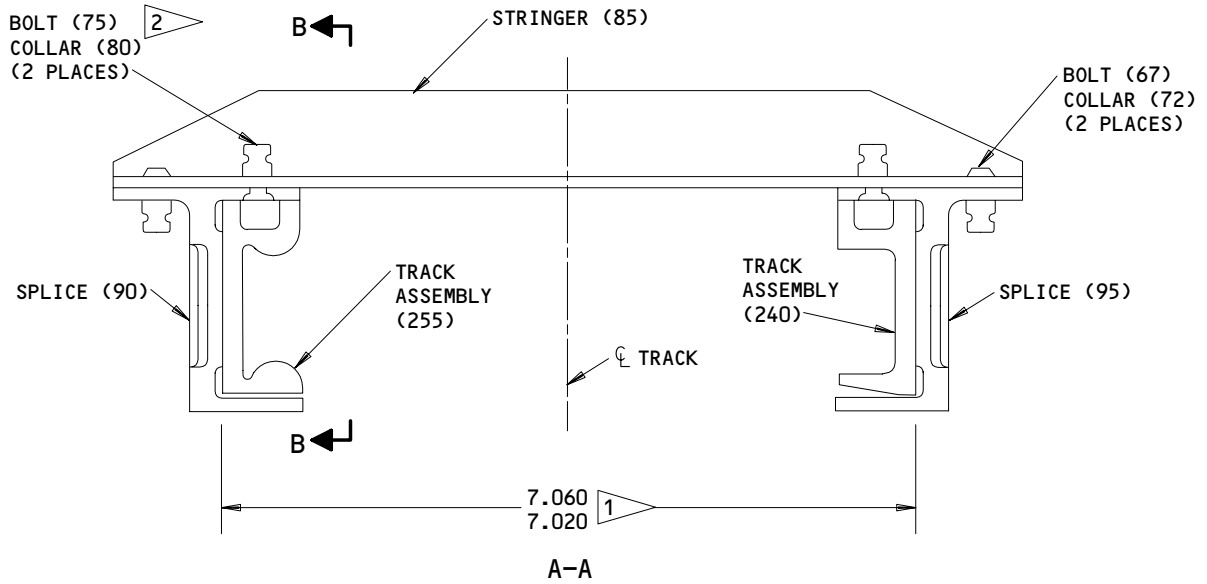
Assembly Details
 Figure 702 (Sheet 1)

52-11-86

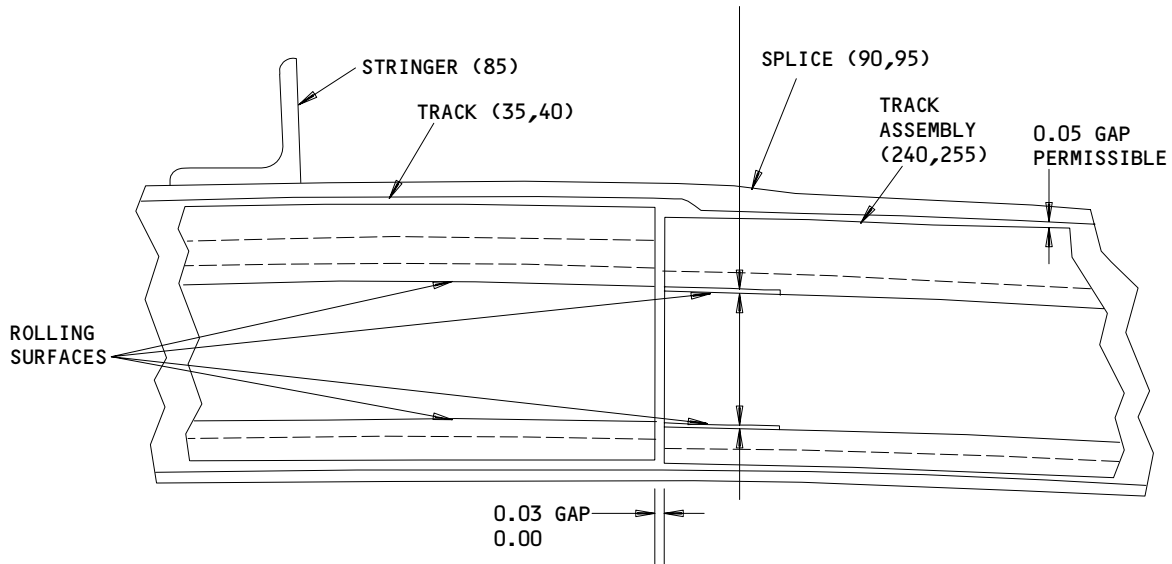
ASSEMBLY
 Page 705
 Oct 10/84

01

143641



ANY MISMATCH OF ROLLING SURFACES TO BE DIVIDED EQUALLY BETWEEN TWO SURFACES



(THIS DETAIL TYPICAL FOR BOTH FWD AND AFT TRACKS)

B-B

1 DIMENSION APPLIES ALONG ENTIRE LENGTH OF TRACK.

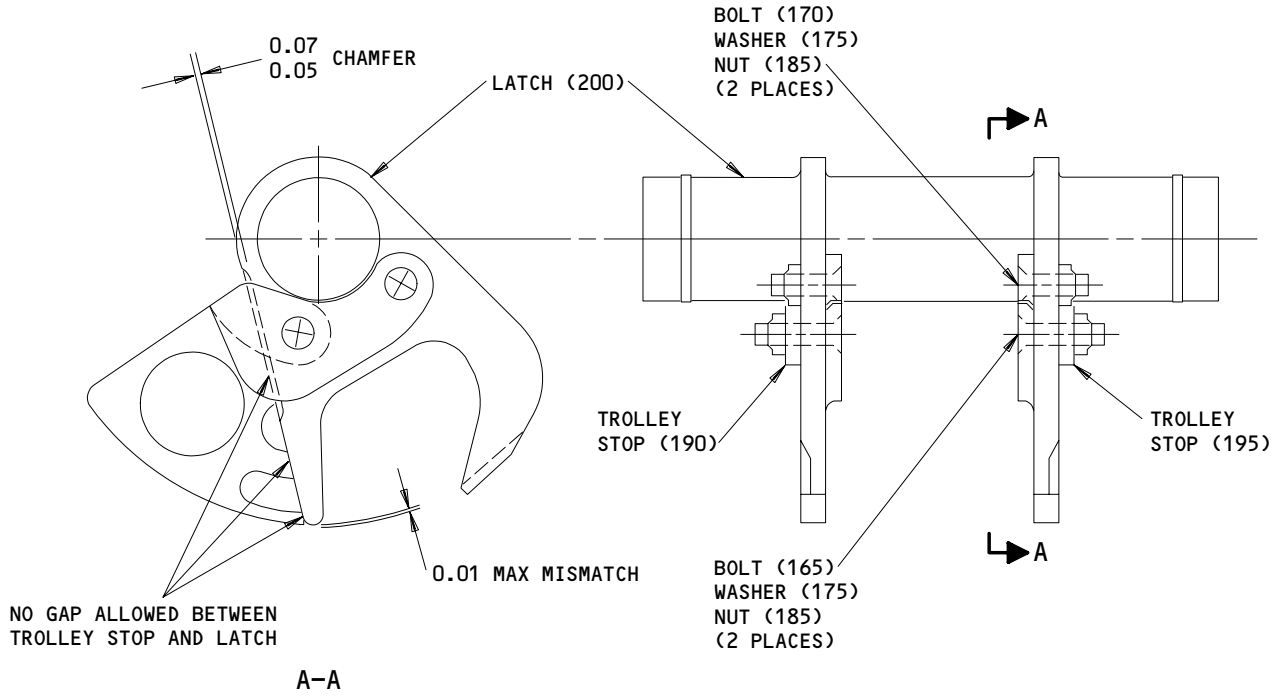
2 INSTALL PRIOR TO FINAL JOINING OF TRACK ASSEMBLY.

Assembly
 Figure 702 (Sheet 2)

52-11-86

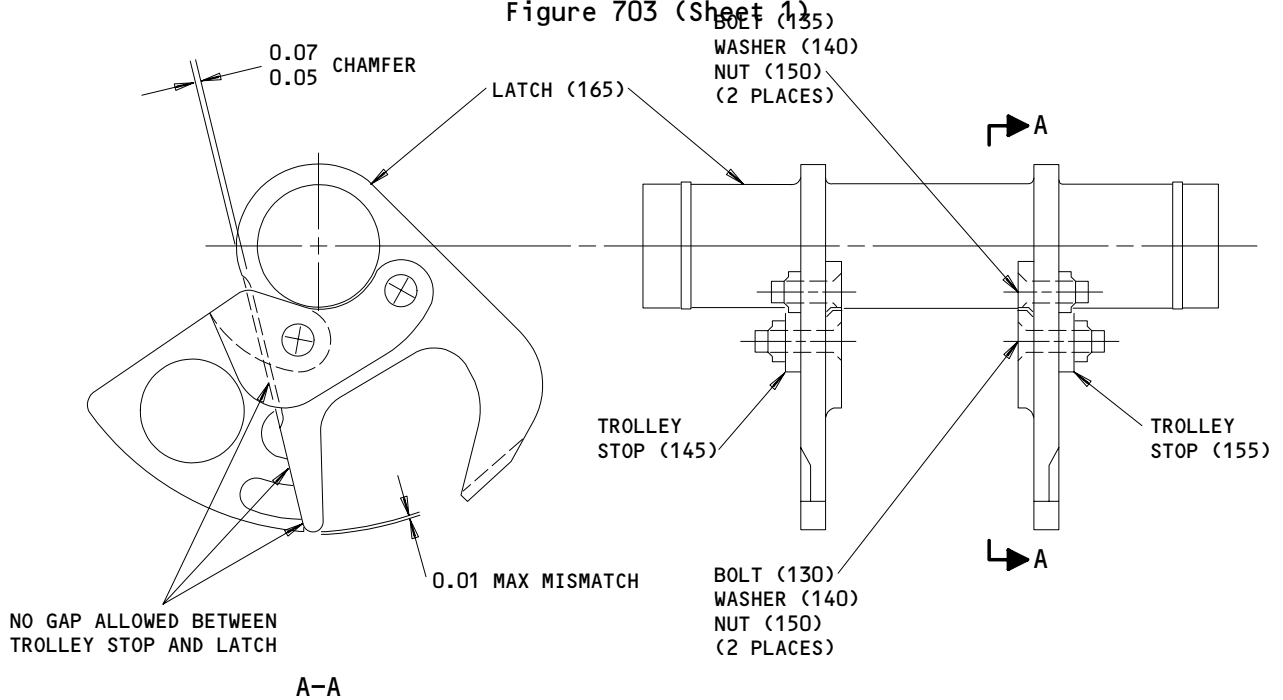
ASSEMBLY
 Page 706
 Oct 10/84

01



ITEM NUMBERS REFER TO IPL FIG. 1

Cam Assembly
 Figure 703 (Sheet 1)



ITEM NUMBERS REFER TO IPL FIG. 2

Cam Assembly
 Figure 703 (Sheet 2)

52-11-86

01

ASSEMBLY
 Page 707
 Oct 10/84

145212

145213

ILLUSTRATED PARTS LIST

1. This section lists and illustrates replaceable or repairable component parts. The Illustrated Parts Catalog contains a complete explanation of the Boeing part numbering system.

2. Indentures show parts relationships as follows:

Assembly

Detail Parts for Assembly

Subassembly

Attaching Parts for Subassembly

Detail Parts for Subassembly

Detail Installation Parts (Included only if installation parts may be returned to shop as part of assembly)

3. One use code letter (A, B, C, etc.) is assigned in the EFF CODE column for each variation of top assembly. All listed parts are used on all top assemblies except when limitations are shown by use code letter opposite individual part entries.

4. Letter suffixes (alpha-variants) are added to item numbers for optional parts, Service Bulletin modification parts, configuration differences (Except left- and right-hand parts), product improvement parts, and parts added between two sequential item numbers. The alpha-variant is not shown on illustrations when appearance and location of all variants of the part is the same.

5. Service Bulletin modifications are shown by the notations PRE SB XXXX and POST SB XXXX.

A. When a new top assembly part number is assigned by Service Bulletin, the notations appear at the top assembly level only. The configuration differences at detail part level are then shown by use code letter.

B. When the top assembly part number is not changed by the Service Bulletin, the notations appear at the detail part level.

6. Parts Interchangeability

Optional
(OPT)

The parts are optional to and interchangeable with other parts having the same item number.

Supersedes, Superseded By
(SUPSDS, SUPSD BY)

The part supersedes and is not interchangeable with the original part.

Replaces, Replaced By
(REPLS, REPLD BY)

The part replaces and is interchangeable with, or is an alternate to, the original part.

52-11-86

ILLUSTRATED PARTS LIST

01

Page 1001

Oct 10/84

VENDORS

06710 VALLEY-TODECO INCORPORATED
12975 BRADLEY AVENUE
SYLMAR, CALIFORNIA 91342

06725 AIR INDUSTRIES CORPORATION
12570 KNOTT STREET
GARDEN GROVE, CALIFORNIA 92641

06950 SCREWCORP VSI CORP AEROSPACE PRODUCTS DIV FAIRCHILD IND INC
13001 EAST TEMPLE AVENUE
CITY OF INDUSTRY, CALIFORNIA 91746

08524 DEUTSCH CO FASTENER DIV
PO BOX 92925 7001 WEST IMPERIAL HIGHWAY
LOS ANGELES, CALIFORNIA 90045

11815 TOWNSEND DIV OF TEXTRON INC CHERRY FASTENER UNIT
BOX 2157 1224 EAST WARNER AVENUE
SANTA ANA, CALIFORNIA 92707

15653 MICRODOT AEROSPACE FASTENING SYS DIV OF MICRODOT INC
800 SOUTH COLLEGE BLVD PO BOX 3001
FULLERTON, CALIFORNIA 92634

23294 AVALON MACHINE PRODUCTS INC
15337 ALLEN STREET
PARAMOUNT, CALIFORNIA 90723

27624 PAUL R BRILES INC P.B. FASTENER DIV
1700 WEST 132ND STREET PO BOX 1157
GARDENA, CALIFORNIA 90249

52828 REPUBLIC FASTENER MFG CORP
1300 RANCHO CONEJO BLVD
NEWBURY PARK, CALIFORNIA 91320

56878 SPS TECHNOLOGIES INC
HIGHLAND AVENUE
JENKINTOWN, PENNSYLVANIA 19046

70265 ALL POWER MANUFACTURING COMPANY
13141 MOLETTE STREET
SANTE FE SPRINGS, CALIFORNIA 90670

52-11-86

ILLUSTRATED PARTS LIST
01 Page 1002
Oct 10/84

**BOEING**
COMPONENT
MAINTENANCE MANUALVENDORS

71087 BOOTS ACFT NUT DIV TOWNSEND CO SEE TEXTRON INC CHERRY
FASTENER TOWNSEND DIV V11815

72962 AMERACE CORP ESNA DIV
2330 VAUXHALL ROAD
UNION, NEW JERSEY 07083

73197 HI-SHEAR CORPORATION
2600 SKYPARK DRIVE
TORRANCE, CALIFORNIA 90509

80539 SPS TECHNOLOGIES INC AEROSPACE PRODUCTS DIV
2701 SOUTH HARBOR BOULEVARD PO BOX 1259
SANTA ANA, CALIFORNIA 92702

92215 VOI-SHAN DIV OF VSI CORP SUB OF FAIRCHILD INDUSTRIAL INC
8463 HIGUERA STREET
CULVER CITY, CALIFORNIA 90230

93907 TEXTRON INC CAMCAR DIV
600 18TH AVENUE
ROCKFORD, ILLINOIS 61101

94892 MASTER MACHINE PRODUCTS CORPORATION
1551 SOUTH PRIMROSE AVE
MONROVIA, CALIFORNIA 91016

97928 LITTON FASTENING SYSTEMS DIV OF LITTON SYSTEMS INC
3969 PARAMONT BOULEVARD
LAKEWOOD, CALIFORNIA 90712

52-11-86ILLUSTRATED PARTS LIST
01 Page 1003
Oct 10/84

PART NUMBER	AIRLINE PART NO.	FIG.	ITEM	TTL REQ
AN960PD10L		1	140	4
		2	105	4
AN960PD416L		1	355	6
		2	315	6
AN960416L		1	175	4
		2	140	4
BACB10EX23		1	155	2
		2	120	2
BACB28AM07B013A		1	285	2
		1	300	1
		2	245	2
		2	260	1
BACB28AP05P013		1	305	1
		2	265	1
BACB28AX8M165		2	300	1
BACB28X8M165		1	340	1
BACB30LH4U8		1	170	2
		2	135	2
BACB30LR4U10		1	165	2
		2	130	2
BACB30MY6K4		1	230	4
		2	195	4
BACB30NR4K6		1	370	6
		2	310	6
BACB30NT3K8		1	135	4
		2	100	4
BACB30NX6K3		1	5	10
		1	10	12
BACB30NX6K4		2	5	10
		2	10	12
BACB30NX8K10		1	320	8
		2	280	8
BACB30NY10K6		1	90	4
		2	55	4
BACB30NY10K7		1	95	8
		2	60	8
BACB30NY10K9		1	100	4
		1	255	2
		2	65	4
		2	215	2
BACB30NY5K5		1	210	4
		2	175	4
BACB30NY6K3		1	110	2
BACB30NY6K4		2	75	4
BACC30M6		1	235	4
		2	200	4

52-11-86

 ILLUSTRATED PARTS LIST
 01.1 Page 1004
 Dec 01/95


BOEING
 COMPONENT
 MAINTENANCE MANUAL

PART NUMBER	AIRLINE PART NO.	FIG.	ITEM	TTL REQ
BACC30X10		1	105	16
		1	260	2
		2	70	16
		2	220	2
		2	220	2
BACC30X5		1	215	4
		2	180	4
BACC30X6		1	15	10
		1	20	12
		1	115	2
		2	15	10
		2	20	12
BACC30X8		2	80	4
		1	335	8
		2	295	8
BACN10JC3		1	145	4
		2	110	4
BACN10JC4		1	360	6
		2	320	6
BACN10JC4CM		1	185	4
		2	150	4
BACN10JP3A		1	55	2
		1	64	2
BACR15BA3AD		1	50	4
		1	63	4
BACR15BA6AD		1	45	4
		1	62	2
BACS40R07U08		1	180	2
		2	145	2
BACS40R20C20F		1	365	3
		2	325	3
BRH10A3		1	145	4
		2	110	4
BRM200A3		1	55	2
		1	64	2
BR1110C4M		1	185	4
		2	150	4
B30MY6K4		1	230	4
		2	195	4
HL10VAZ6-4		1	230	4
		2	195	4
HL1187-10		1	105	16
		1	260	2
		2	70	16
		2	220	2
		2	220	2
HL1187-5		1	215	4
		2	180	4

52-11-86

 ILLUSTRATED PARTS LIST
 01.1 Page 1005
 Dec 01/95

PART NUMBER	AIRLINE PART NO.	FIG.	ITEM	TTL REQ
HL1187-6		1	15	10
		1	20	12
		1	115	2
		2	15	10
		2	20	12
		2	80	4
HL1187-8		1	335	8
		2	295	8
HL12VAZ6-3		1	5	10
HL12VAZ6-4		1	10	12
		2	5	10
		2	10	12
HL12VAZ8-10		1	320	8
		2	280	8
HL13VAZ10-6		1	90	4
		2	55	4
HL13VAZ10-7		1	95	8
		2	60	8
HL13VAZ10-9		1	100	4
		1	255	2
		2	65	4
		2	215	2
HL13VAZ5-5		1	210	4
		2	175	4
HL13VAZ6-3		1	110	2
HL13VAZ6-4		2	75	4
HL79-6		1	235	4
		2	200	4
HL86PB5		1	215	4
		1	215	4
		1	215	4
		2	180	4
		2	180	4
		2	180	4
HL87-10		1	105	16
		1	105	16
		1	105	16
		2	70	16
		2	70	16
		2	70	16
HL87-5		1	215	4
		1	215	4
		1	215	4
		2	180	4
		2	180	4
		2	180	4

52-11-86

 ILLUSTRATED PARTS LIST
 01.1 Page 1006
 Dec 01/95


BOEING
 COMPONENT
 MAINTENANCE MANUAL

PART NUMBER	AIRLINE PART NO.	FIG.	ITEM	TTL REQ
HL87-6		1	15	10
		1	15	10
		1	15	10
		2	15	10
		2	15	10
		2	15	10
		2	15	10
HL87-8		1	335	8
		1	335	8
		1	335	8
		2	295	8
		2	295	8
		2	295	8
		2	295	8
H01-4BAC		1	185	4
		2	150	4
H10-3BAC		1	145	4
		2	110	4
L8006K4		1	230	4
		2	195	4
L801-10K6		1	90	4
		2	55	4
L801-10K7		1	95	8
		2	60	8
L801-10K9		1	100	4
		2	65	4
L801-5K5		1	210	4
		2	175	4
L801-6K3		1	110	2
L801-6K4		2	75	4
L802-6K3		1	5	10
L802-6K4		2	5	10
L802-8K10		1	320	8
		2	280	8
MK1000-3BAC		1	55	2
NS103197-02		1	55	2
NS202101-02		1	145	4
		2	110	4
NS202101SE048		1	185	4
		2	150	4
RMA9201M3		1	55	2
RMLH9075-3W		1	145	4
		2	110	4
T6C428JM		1	185	4
		2	150	4
T6S1032J		1	145	4
		2	110	4
T8076S1032		1	55	2
VN202A1-02		1	55	2

52-11-86

 ILLUSTRATED PARTS LIST
 01.1 Page 1007
 Dec 01/95

PART NUMBER	AIRLINE PART NO.	FIG.	ITEM	TTL REQ
VN303A02		1	145	4
		2	110	4
VN303D048		1	185	4
		2	150	4
109LH9075-4W		1	185	4
		2	150	4
141T6105-28		2	50	1
141T6105-3		1	1	RF
141T6105-33		1	70	1
141T6105-35		1	75	1
141T6105-37		2	35	1
141T6105-39		2	40	1
141T6105-4		1	1A	RF
		2	1	RF
141T6105-45		1	1B	RF
141T6105-47		1	85	1
141T6105-49		1	1C	RF
141T6105-50		1	1D	RF
		2	1A	RF
141T6105-51		1	1E	RF
141T6105-53		1	70A	1
141T6105-54		2	35A	1
141T6105-55		1	75A	1
141T6105-56		2	40A	1
141T6105-63		1	350	1
141T6105-65		1	1F	RF
141T6105-7003		1	80	1
141T6105-7004		2	45	1
141T6107-25		1	350A	1
141T6180-3		1	200	1
141T6180-4		2	165	1
141T6180-8		1	205	1
141T6180-9		2	170	1
141T6236-3		1	280	1
		2	240	1
141T6236-5		1	290	1
		2	250	1
141T6237-4		1	310	
		2	270	1
141T6237-5		1	295	1
		2	255	1
141T6238-1		2	90	1
141T6238-2		1	130	1
		2	95	1
141T6238-3		1	125	1
141T6548-1		1	190	1
		2	155	1

52-11-86

 ILLUSTRATED PARTS LIST
 01.1 Page 1008
 Dec 01/95


BOEING
 COMPONENT
 MAINTENANCE MANUAL

PART NUMBER	AIRLINE PART NO.	FIG.	ITEM	TTL REQ
141T6548-2		1	195	1
		2	160	1
141T6549-1		1	160	1
141T6549-2		2	125	1
141T6593-13		1	315A	
		2	275A	
141T6593-14		1	345A	
		2	305A	
141T6593-15		1	315	
		2	275	
141T6593-16		1	345	
		2	305	
141T6593-19		1	315D	1
		2	275C	1
141T6593-20		1	345D	1
		2	305C	1
141T6593-21		1	315C	1
		2	275B	1
141T6593-22		1	345C	1
		2	305B	1
146T6107-17		1	120	1
146T6107-19		1	25	5
		1	30	6
		2	25	5
		2	30	6
146T6107-21		1	220	1
		2	185	1
146T6107-22		1	225	1
		2	190	1
146T6107-23		1	240	1
		2	205	1
146T6107-25		1	245	
146T6107-27		1	270	1
		2	230	1
146T6107-28		1	275	1
		2	235	1
146T6107-39		2	85	2
146T6107-41		1	265	2
		2	225	2
146T6107-43		1	250	1
		2	210	1
146T6107-45		1	330	4
		2	290	4
146T6107-46		2	207	1
146T6107-63		1	150	2
		2	115	2

52-11-86

ILLUSTRATED PARTS LIST

01.1

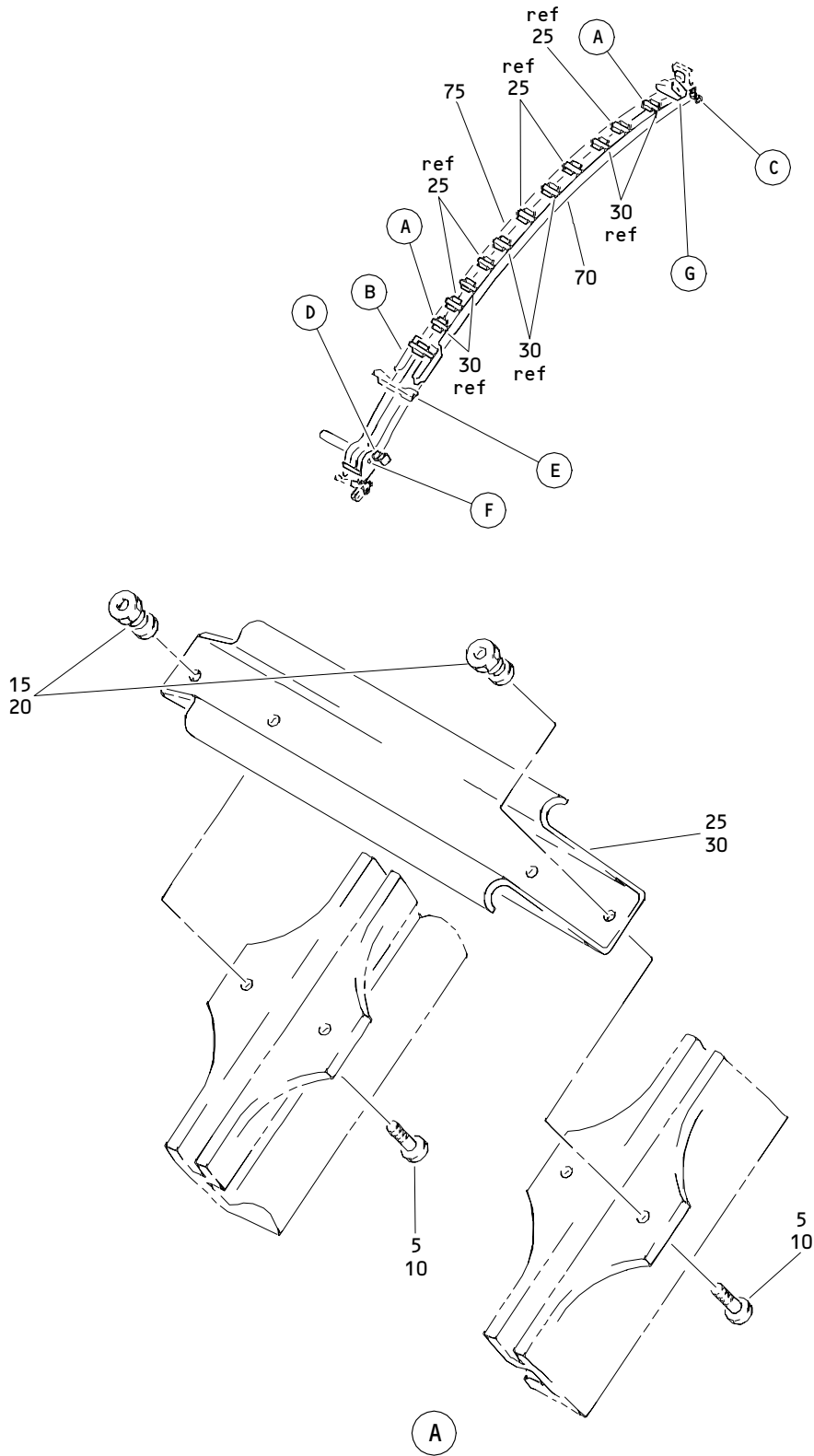
Page 1009

Dec 01/95

PART NUMBER	AIRLINE PART NO.	FIG.	ITEM	TTL REQ
146T6107-89		1	325	4
		2	285	4
284T0450-1		1	35	1
284T0450-2		1	60	1
284T0451-1		1	40	
		1	61	1
284T0451-2		1	65	1
66014-6		1	235	4
		2	200	4
96-02		1	145	4
		2	110	4
97E48		1	185	4
		2	150	4

52-11-86

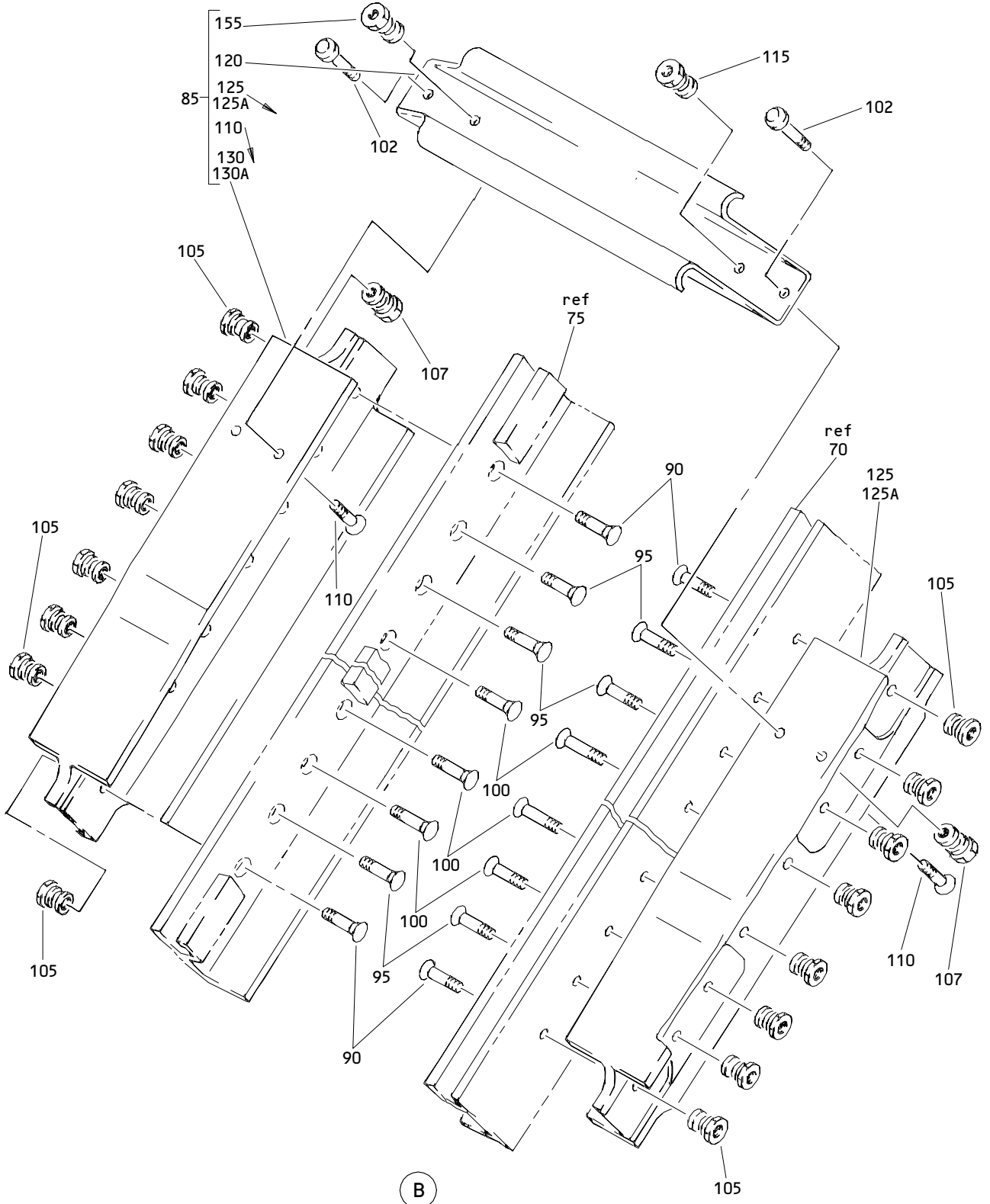
 ILLUSTRATED PARTS LIST
 01.1 Page 1010
 Dec 01/95



Forward Entry and Service Door Track Assembly
 Figure 1 (Sheet 1)

52-11-86

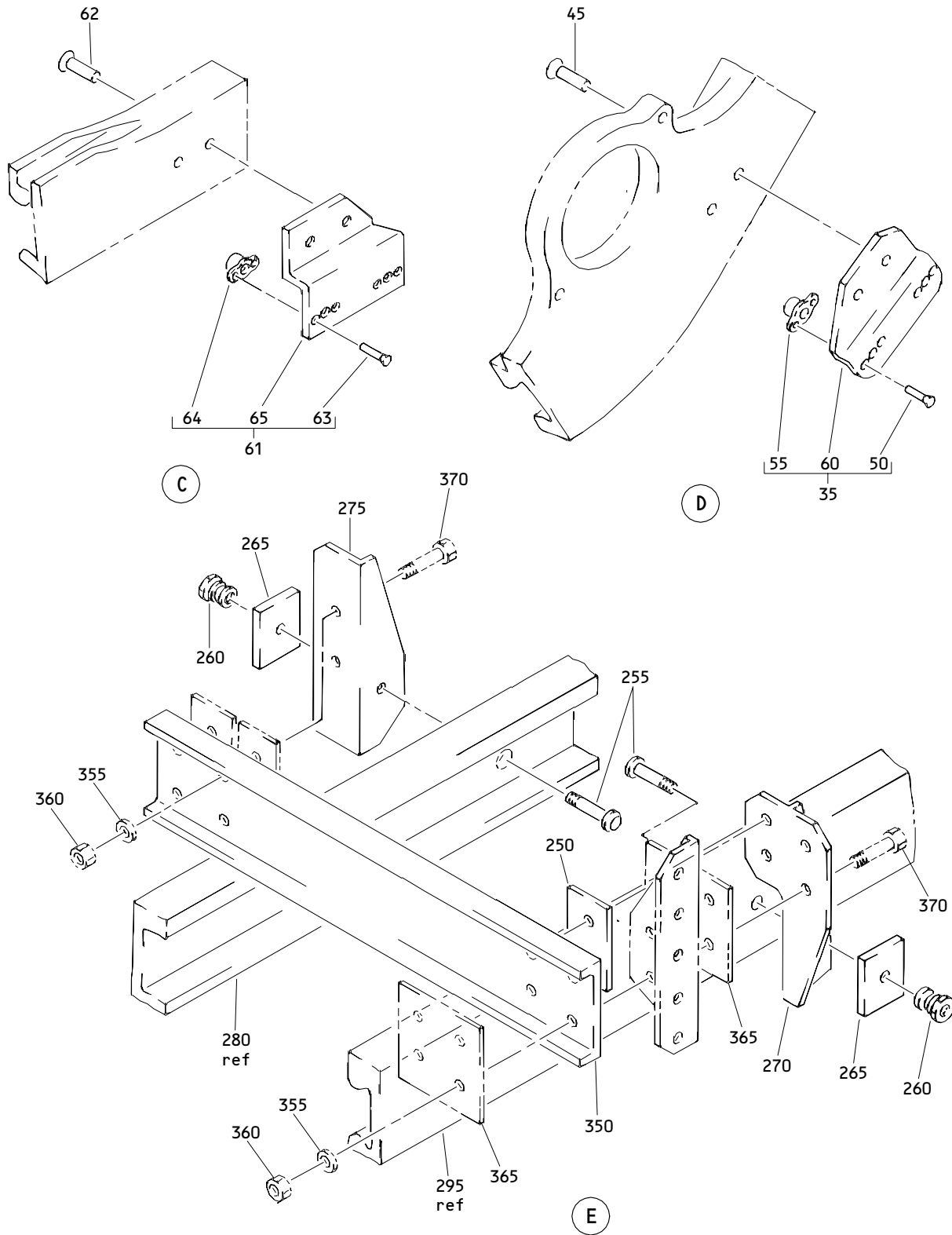
ILLUSTRATED PARTS LIST
 01.1 Page 1012
 Dec 01/95



Forward Entry and Service Door Track Assembly
Figure 1 (Sheet 2)

52-11-86

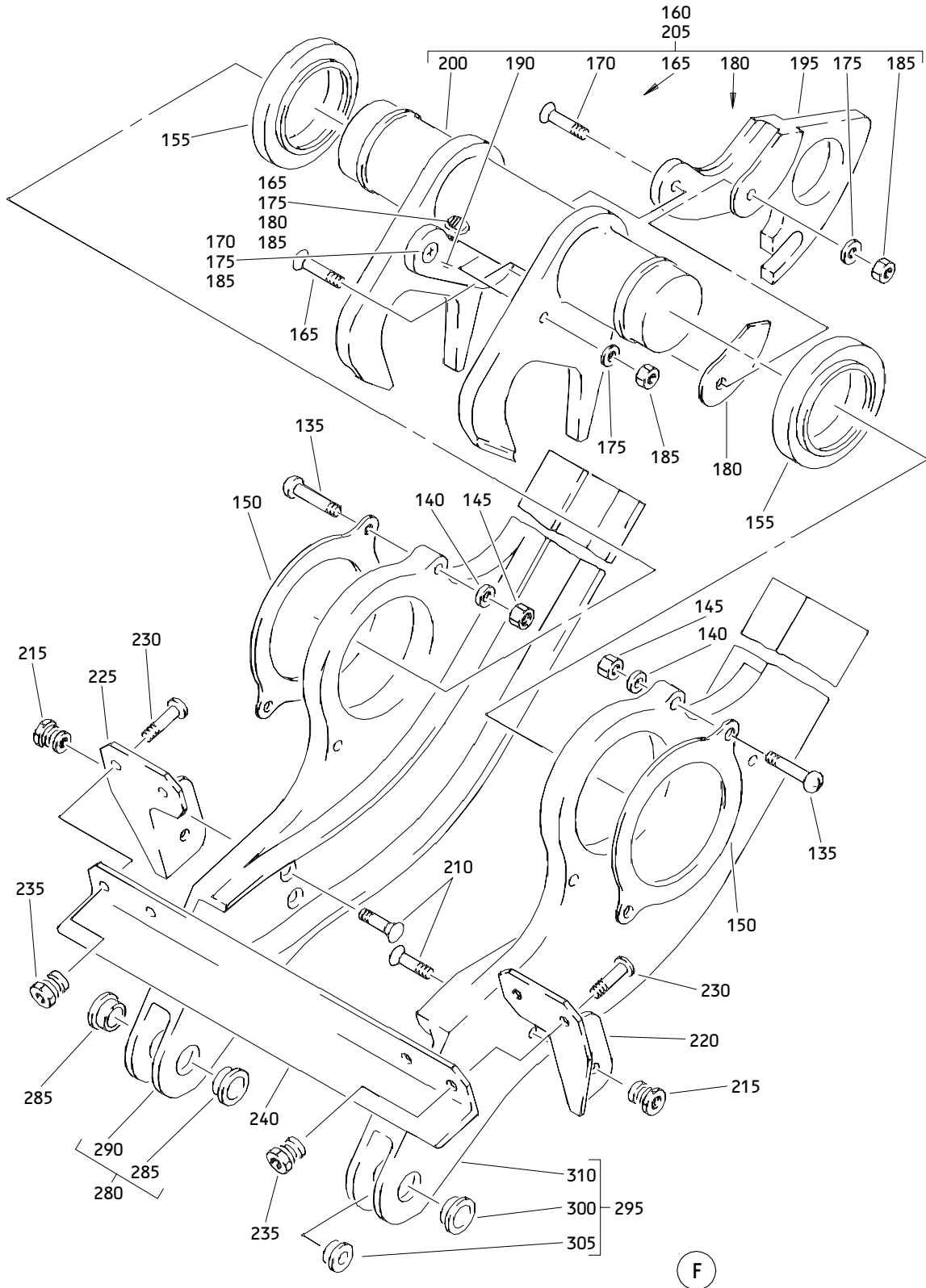
ILLUSTRATED PARTS LIST
01.1 Page 1013
Dec 01/95



Forward Entry and Service Door Track Assembly
 Figure 1 (Sheet 3)

52-11-86

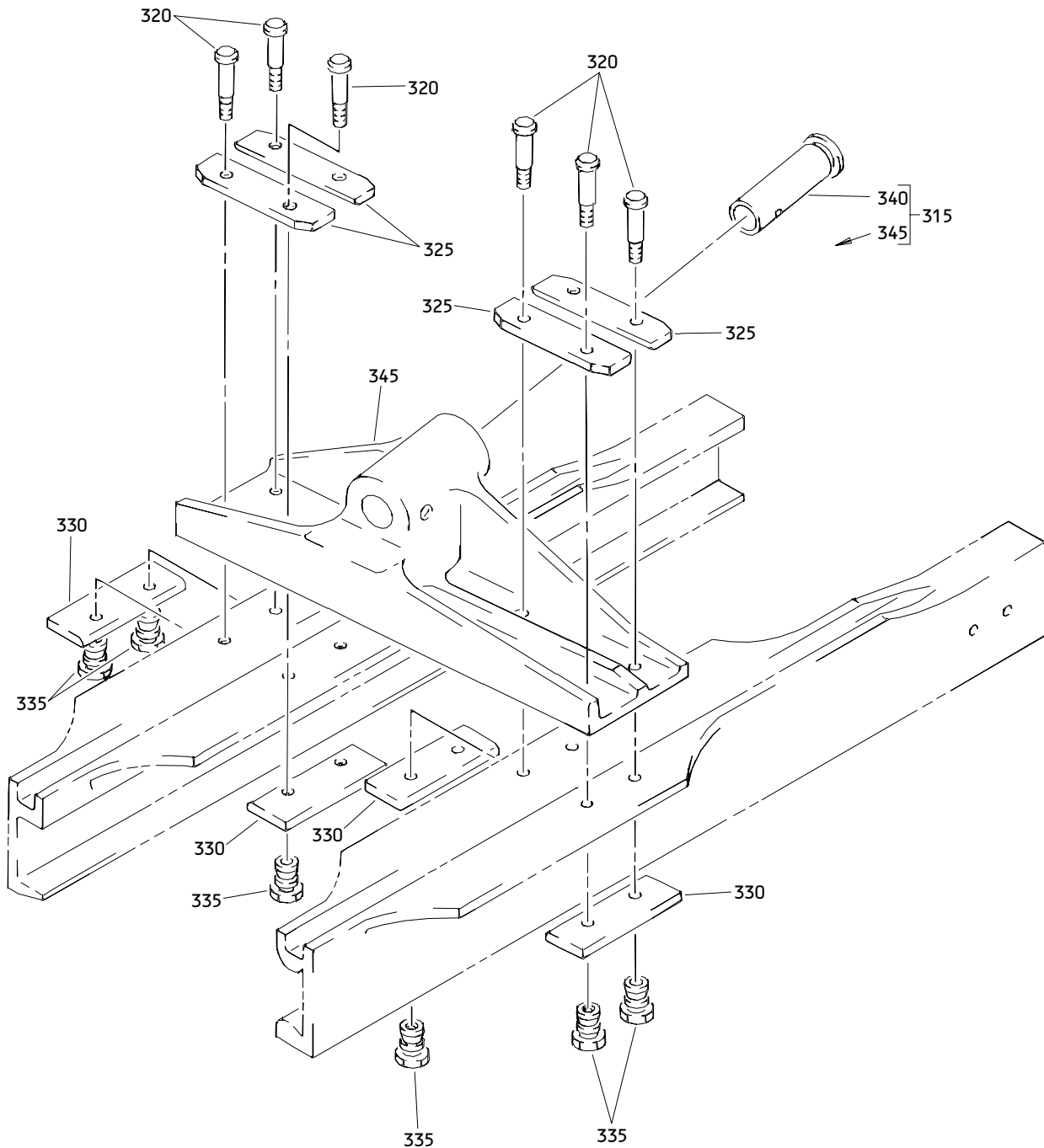
ILLUSTRATED PARTS LIST
 01.1 Page 1014
 Dec 01/95



Forward Entry and Service Door Track Assembly
Figure 1 (Sheet 4)

52-11-86

ILLUSTRATED PARTS LIST
01.1 Page 1015
Dec 01/95



G

Forward Entry and Service Door Track Assembly
 Figure 1 (Sheet 5)

52-11-86

ILLUSTRATED PARTS LIST
 01.1 Page 1016
 Dec 01/95


BOEING
 COMPONENT
 MAINTENANCE MANUAL

FIG. & ITEM	PART NO.	AIRLINE PART NUMBER	NOMENCLATURE 1234567	EFF CODE	QTY PER ASSY
01- -1	141T6105-3		TRACK ASSY-FWD ENTRY AND SVCE DOOR	A	RF
-1A	141T6105-4		TRACK ASSY-FWD ENTRY AND SVCE DOOR	B	RF
-1B	141T6105-45		(FOR DETAILS SEE FIG. 2) TRACK ASSY-FWD ENTRY AND SVCE DOOR	C	RF
-1C	141T6105-49		TRACK ASSY-FWD ENTRY AND SVCE DOOR	D	RF
-1D	141T6105-50		TRACK ASSY-FWD ENTRY AND SVCE DOOR	E	RF
-1E	141T6105-51		(FOR DETAILS SEE FIG. 2) TRACK ASSY-FWD ENTRY AND SVCE DOOR	F	RF
-1F	141T6105-65		TRACK ASSY-FWD ENTRY AND SVCE DOOR	G	RF
5	HL12VAZ6-3		.BOLT- (V56878) (SPEC BACB30NX6K3) (OPT HL12VAZ6-3 (V73197)) (OPT HL12VAZ6-3 (V92215)) (OPT HL12VAZ6-3 (V97928)) (OPT L802-6K3 (V06725))	ACDFG	10
10	HL12VAZ6-3		.BOLT- (V56878) (SPEC BACB30NX6K3) (REFER TO ITEM 5 FOR OPTIONAL PARTS)	AC	12

52-11-86

 ILLUSTRATED PARTS LIST
 01.1 Page 1017
 Dec 01/95

FIG. & ITEM	PART NO.	AIRLINE PART NUMBER	NOMENCLATURE 1234567	EFF CODE	QTY PER ASSY
01-15	HL1187-6		.COLLAR- (V73197) (SPEC BACC30X6) (OPT HL87-6 (V73197)) (OPT HL87-6 (V92215)) (OPT HL1187-6 (V56878)) (OPT HL1187-6 (V92215)) (OPT HL87-6 (V56878))	ACDFG	10
20	HL1187-6		.COLLAR- (V73197) (SPEC BACC30X6) (REFER TO ITEM 15 FOR OPTIONAL PARTS)	AC	12
25	146T6107-19		.STRINGER	ACDFG	5
30	146T6107-19		.STRINGER	AC	6
35	284T0450-1		.BRACKET ASSY-DOOR DOWN STOP	ADG	1
40	284T0451-1		DELETED		
45	BACR15BA6AD		.RIVET -----*-----	ADG	4
50	BACR15BA3AD		..RIVET	ADG	4
55	BRM200A3		..NUTPLATE- (V52828) (SPEC BACN10JP3A) (OPT MK1000-3BAC (V15653)) (OPT NS103197-02 (V80539)) (OPT RMA9201M3 (V72962)) (OPT T8076S1032 (V11815)) (OPT VN202A1-02 (V92215))	ADG	2

52-11-86

 ILLUSTRATED PARTS LIST
 01.1 Page 1018
 Dec 01/95


BOEING
 COMPONENT
 MAINTENANCE MANUAL

FIG. & ITEM	PART NO.	AIRLINE PART NUMBER	NOMENCLATURE 1234567	EFF CODE	QTY PER ASSY
01-60	284T0450-2		..BRACKET- (USED ON ITEM 35)	ADG	1
61	284T0451-1		..BRACKET-DOOR UP STOP	ADG	1
62	BACR15BA6AD		.RIVET	ADG	2
63	BACR15BA3AD		..RIVET	ADG	4
64	BRM200A3		..NUTPLATE (SPEC BACN10JP3A)	ADG	2
65	284T0451-2		..BRACKET- (USED ON ITEM 40)	ADG	1
70	141T6105-33		.TRACK-AFT	AC	1
-70A	141T6105-53		.TRACK-AFT	DFG	1
75	141T6105-35		.TRACK-FWD	AC	1
-75A	141T6105-55		.TRACK-FWD	DFG	1
-80	141T6105-7003		.COLLECTOR-COMMON POINT	ACDFG	1
85	141T6105-47		..SPLICE ASSY ATTACHING PARTS	ACDFG	1
90	HL13VAZ10-6		..BOLT- (V56878) (SPEC BACB30NY10K6) (OPT HL13VAZ10-6 (V73197)) (OPT HL13VAZ10-6 (V92215)) (OPT HL13VAZ10-6 (V97928)) (OPT L801-10K6 (V06725))	ACDFG	4
95	HL13VAZ10-7		..BOLT- (V56878) (SPEC BACB30NY10K7) (OPT HL13VAZ10-7 (V73197)) (OPT HL13VAZ10-7 (V92215)) (OPT HL13VAZ10-7 (V97928)) (OPT L801-10K7 (V06725))	ACDFG	8

52-11-86

ILLUSTRATED PARTS LIST

01.1

Page 1019

Dec 01/95

FIG. & ITEM	PART NO.	AIRLINE PART NUMBER	NOMENCLATURE 1234567	EFF CODE	QTY PER ASSY
01-100	HL13VAZ10-9		..BOLT- (V56878) (SPEC BACB30NY10K9) (OPT HL13VAZ10-9 (V73197)) (OPT HL13VAZ10-9 (V92215)) (OPT HL13VAZ10-9 (V97928)) (OPT L801-10K9 (V06725))	ACDFG	4
105	HL1187-10		..COLLAR- (V73197) (SPEC BACC30X10) (OPT HL87-10 (V73197)) (OPT HL87-10 (V92215)) (OPT HL1187-10 (V56878)) (OPT HL1187-10 (V92215)) (OPT HL87-10 (V56878)) -----*-----	ACDFG	16
110	HL13VAZ6-3		...BOLT- (V56878) (SPEC BACB30NY6K3) (OPT HL13VAZ6-3 (V73197)) (OPT HL13VAZ6-3 (V92215)) (OPT HL13VAZ6-3 (V97928)) (OPT L801-6K3 (V06725))	ACDFG	2

52-11-86

 ILLUSTRATED PARTS LIST
 01.1 Page 1020
 Dec 01/95


BOEING
 COMPONENT
 MAINTENANCE MANUAL

FIG. & ITEM	PART NO.	AIRLINE PART NUMBER	NOMENCLATURE 1234567	EFF CODE	QTY PER ASSY
01-115	HL1187-6		...COLLAR- (V73197) (SPEC BACC30X6) (REFER TO ITEM 15 FOR OPTIONAL PARTS)	ACDFG	2
120	146T6107-17		...STRINGER	ACDFG	1
125	141T6238-3		...SPLICE	ACDFG	1
130	141T6238-2		...SPLICE	ACDFG	1
135	BACB30NT3K8		..BOLT- (V06710) (SPEC BACB30NT3K8) (OPT BACB30NT3K8 (V06725)) (OPT BACB30NT3K8 (V06950)) (OPT BACB30NT3K8 (V08524)) (OPT BACB30NT3K8 (V27624)) (OPT BACB30NT3K8 (V73197)) (OPT BACB30NT3K8 (V80539)) (OPT BACB30NT3K8 (V92215)) (OPT BACB30NT3K8 (V93907)) (OPT BACB30NT3K8 (V97928))	ACDFG	4

52-11-86

ILLUSTRATED PARTS LIST

01.1

Page 1021

Dec 01/95

FIG. & ITEM	PART NO.	AIRLINE PART NUMBER	NOMENCLATURE 1234567	EFF CODE	QTY PER ASSY
01-					
140	AN960PD10L		..WASHER	ACDFG	4
145	H10-3BAC		..NUT- (V15653) (SPEC BACN10JC3) (OPT NS202101-02 (V80539)) (OPT RMLH9075-3W (V72962)) (OPT T6S1032J (V71087)) (OPT VN303A02 (V92215)) (OPT 96-02 (V80539)) (OPT BRH10A3 (V52828))	ACDFG	4
150	146T6107-63		..RETAINER-BRG	ACDFG	2
155	BACB10EX23		..BEARING	ACDFG	2
160	141T6549-1		..CAM ASSY-LATCH (OPT ITEM 205)	ACDFG	1
165	BACB30LR4U10		...BOLT	ACDFG	2
170	BACB30LH4U8		...BOLT	ACDFG	2
175	AN960416L		...WASHER	ACDFG	4
180	BACS40R07U08		...SHIM	ACDFG	2
185	BR1110C4M		...NUT- (V52828) (SPEC BACN10JC4CM) (OPT H01-4BAC (V15653)) (OPT NS202101SE048 (V80539)) (OPT T6C428JM (V11815)) (OPT VN303D048 (V92215)) (OPT 109LH9075-4W (V72962)) (OPT 97E48 (V80539))	ACDFG	4

52-11-86

 ILLUSTRATED PARTS LIST
 01.1 Page 1022
 Dec 01/95


BOEING
 COMPONENT
 MAINTENANCE MANUAL

FIG. & ITEM	PART NO.	AIRLINE PART NUMBER	NOMENCLATURE 1234567	EFF CODE	QTY PER ASSY
01-					
190	141T6548-1		...STOP-TROLLEY	ACDFG	1
195	141T6548-2		...STOP-TROLLEY	ACDFG	1
200	141T6180-3		...LATCH	ACDFG	1
205	141T6180-8		..LATCH-CAM (OPT ITEM 160)	ACDFG	1
210	HL13VAZ5-5		..BOLT- (V56878) (SPEC BACB30NY5K5) (OPT HL13VAZ5-5 (V73197)) (OPT HL13VAZ5-5 (V92215)) (OPT HL13VAZ5-5 (V97928)) (OPT L801-5K5 (V06725))	ACDFG	4
215	HL1187-5		..COLLAR- (V73197) (SPEC BACC30X5) (OPT HL87-5 (V73197)) (OPT HL87-5 (V92215)) (OPT HL86PB5 (V73197)) (OPT HL86PB5 (V56878)) (OPT HL86PB5 (V92215)) (OPT HL1187-5 (V56878)) (OPT HL1187-5 (V92215)) (OPT HL87-5 (V56878))	ACDFG	4

52-11-86

ILLUSTRATED PARTS LIST

01.1

Page 1023

Dec 01/95

FIG. & ITEM	PART NO.	AIRLINE PART NUMBER	NOMENCLATURE 1234567	EFF CODE	QTY PER ASSY
01-					
220	146T6107-21		..CLIP	ACDFG	1
225	146T6107-22		..CLIP	ACDFG	1
230	HL10VAZ6-4		..BOLT- (V56878) (SPEC BACB30MY6K4) (OPT B30MY6K4 (V97928)) (OPT HL10VAZ6-4 (V73197)) (OPT HL10VAZ6-4 (V92215)) (OPT HL10VAZ6-4 (V97928)) (OPT L8006K4 (V06725))	ACDFG	4
235	HL79-6		..COLLAR- (V56878) (SPEC BACC30M6) (OPT HL79-6 (V73197)) (OPT HL79-6 (V92215)) (OPT 66014-6 (V56878))	ACDFG	4
240	146T6107-23		..ANGLE	ACDFG	1
245	146T6107-25		DELETED		
250	146T6107-43		..FILLER	ACDFG	1
255	HL13VAZ10-9		..BOLT- (V56878) (SPEC BACB30NY10K9) (REFER TO ITEM 100 FOR OPTIONAL PARTS)	ACDFG	2
260	HL1187-10		..COLLAR- (V73197) (SPEC BACC30X10) (REFER TO ITEM 105 FOR OPTIONAL PARTS)	ACDFG	2

52-11-86

ILLUSTRATED PARTS LIST

01.1

Page 1024

Dec 01/95


BOEING
 COMPONENT
 MAINTENANCE MANUAL

FIG. & ITEM	PART NO.	AIRLINE PART NUMBER	NOMENCLATURE 1234567	EFF CODE	QTY PER ASSY
01-					
265	146T6107-41		..FILLER	ACDFG	2
270	146T6107-27		..CLIP	ACDFG	1
275	146T6107-28		..CLIP	ACDFG	1
280	141T6236-3		..TRACK ASSY	ACDFG	1
285	BACB28AM07B013A		...BUSHING- (V23294) (SPEC BACB28AM07B013A) (OPT BACB28AM07B013A (V70265)) (OPT BACB28AM07B013A (V94892))	ACDFG	2
290	141T6236-5		...TRACK	ACDFG	1
295	141T6237-5		..TRACK ASSY	ACDFG	1
300	BACB28AM07B013A		...BUSHING- (V23294) (SPEC BACB28AM07B013A) (REFER TO ITEM 285 FOR ADDITIONAL VENDORS)	ACDFG	1
305	BACB28AP05P013		...BUSHING- (V23294) (SPEC BACB28AP05P013) (OPT BACB28AP05P013 (V70265)) (OPT BACB28AP05P013 (V94892))	ACDFG	1
310	141T6237-4		...TRACK		
315	141T6593-15		DELETED		
315A	141T6593-13		DELETED		
315C	141T6593-21		..BRACKET ASSY- (OPT ITEM 315D)	ACDFG	1
-315D	141T6593-19		..BRACKET ASSY- (OPT ITEM 315C)	ACDFG	1

52-11-86

ILLUSTRATED PARTS LIST

01.1

Page 1025

Dec 01/95

FIG. & ITEM	PART NO.	AIRLINE PART NUMBER	NOMENCLATURE 1234567	EFF CODE	QTY PER ASSY
01-					
320	HL12VAZ8-10		ATTACHING PARTS ..BOLT- (V56878) (SPEC BACB30NX8K10) (OPT HL12VAZ8-10 (V73197)) (OPT HL12VAZ8-10 (V92215)) (OPT HL12VAZ8-10 (V97928)) (OPT L802-8K10 (V06725))	ACDFG	8
325	146T6107-89		..FILLER	ACDFG	4
330	146T6107-45		..FILLER	ACDFG	4
335	HL1187-8		..COLLAR- (V73197) (SPEC BACC30X8) (OPT HL87-8 (V73197)) (OPT HL87-8 (V92215)) (OPT HL1187-8 (V56878)) (OPT HL1187-8 (V92215)) (OPT HL87-8 (V56878)) -----*	ACDFG	8
340	BACB28X8M165		...BUSHING	ACDFG	1
345	141T6593-16		DELETED		
345A	141T6593-14		DELETED		
345C	141T6593-22		...BRACKET- (USED ON ITEM 315C)	ACDFG	1
-345D	141T6593-20		...BRACKET- (USED ON ITEM 315D)	ACDFG	1

52-11-86

 ILLUSTRATED PARTS LIST
 01.1 Page 1026
 Dec 01/95


BOEING
 COMPONENT
 MAINTENANCE MANUAL

FIG. & ITEM	PART NO.	AIRLINE PART NUMBER	NOMENCLATURE 1234567	EFF CODE	QTY PER ASSY
01-					
350	141T6105-63		. SUPPORT-LWR	G	1
350A	141T6107-25		. SUPPORT-LWR	ACDF	1
355	AN960PD416L		.. WASHER	ACDFG	6
360	BACN10JC4		.. NUT	ACDFG	6
365	BACS40R20C20F		.. SHIM	ACDFG	3
370	BACB30NR4K6		.. BOLT	ACDFG	6

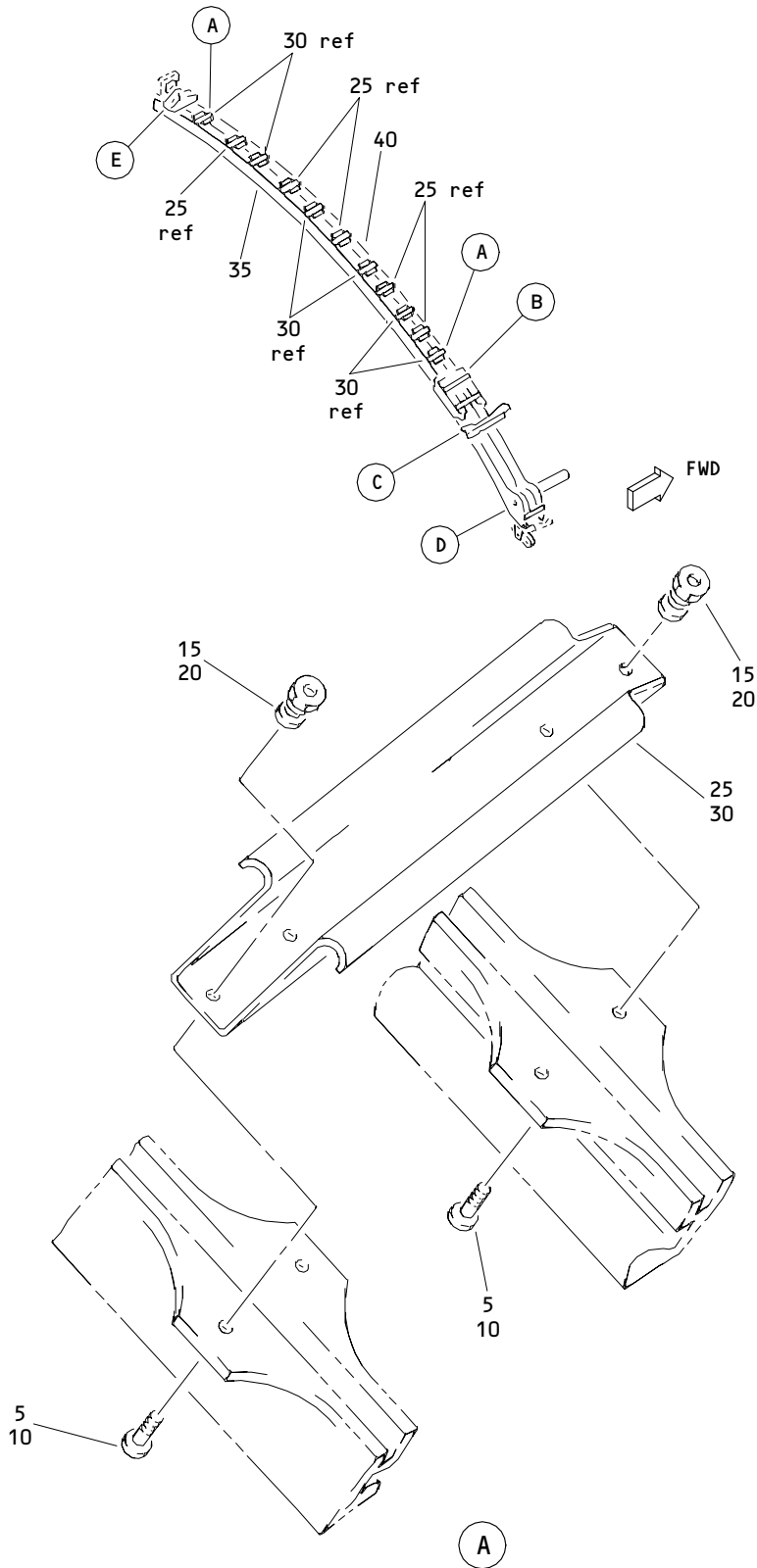
52-11-86

ILLUSTRATED PARTS LIST

01.1

Page 1027

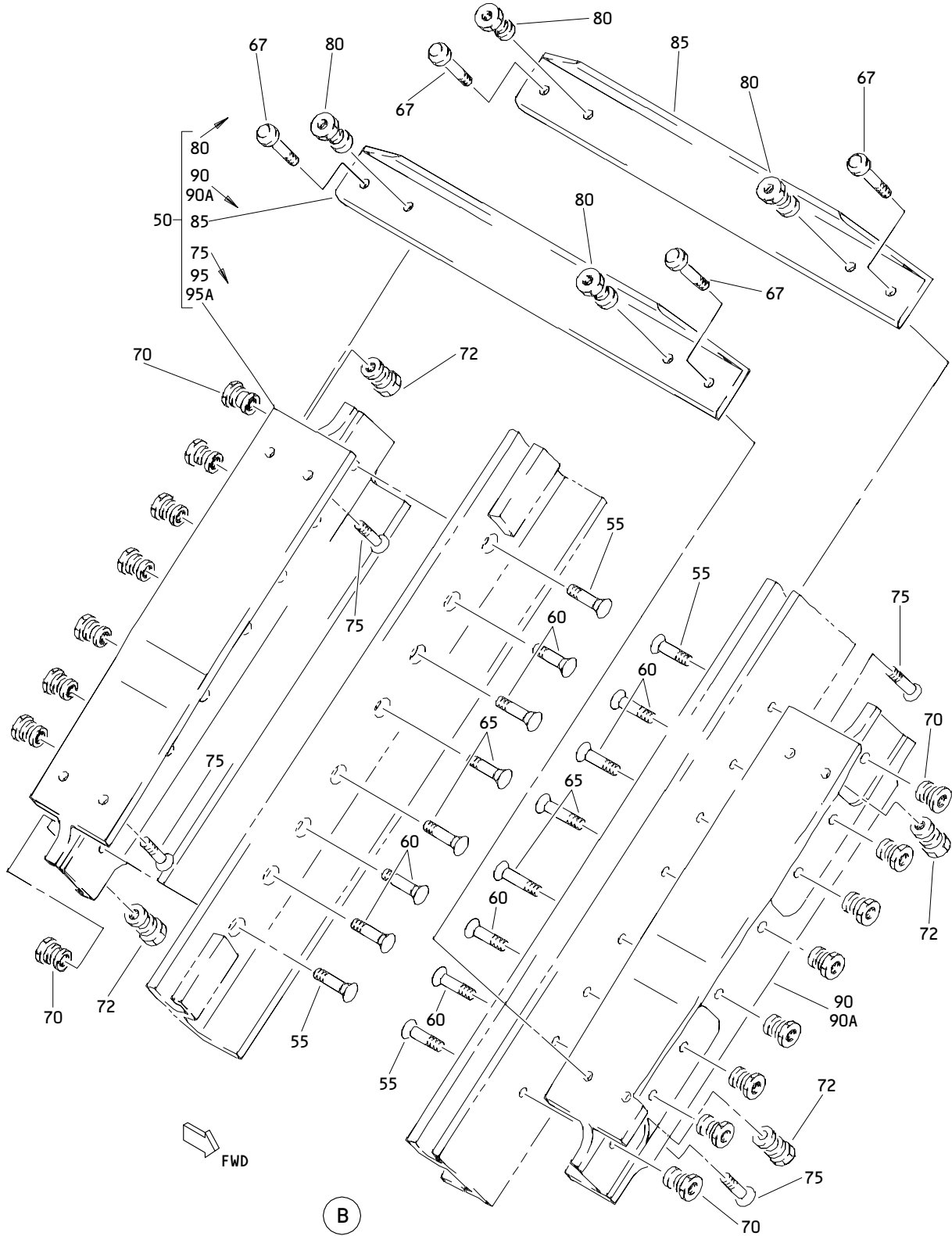
Dec 01/95



Forward Entry and Service Door Track Assembly
 Figure 2 (Sheet 1)

52-11-86

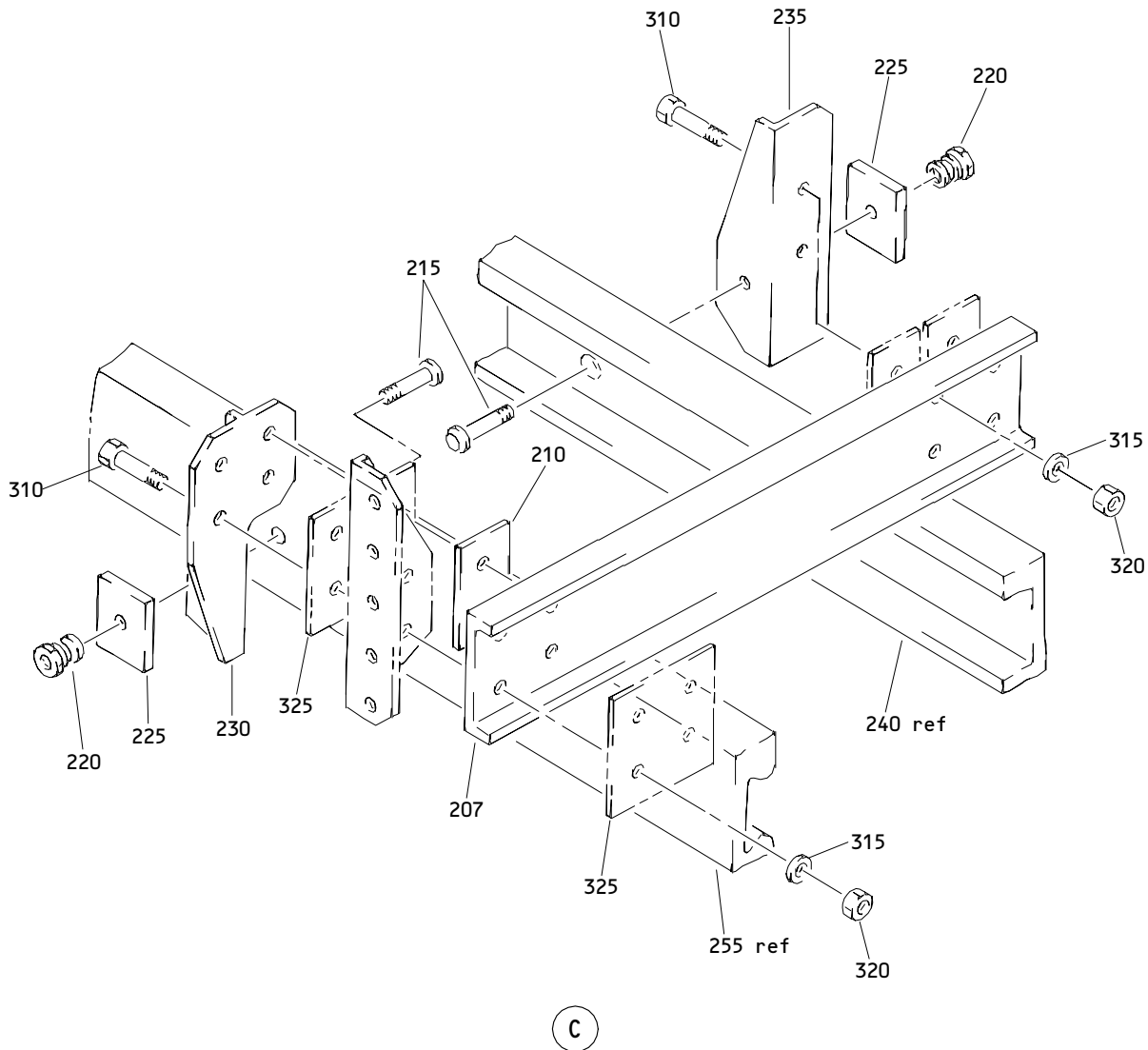
ILLUSTRATED PARTS LIST
 01.1 Page 1028
 Dec 01/95



Forward Entry and Service Door Track Assembly
Figure 2 (Sheet 2)

52-11-86

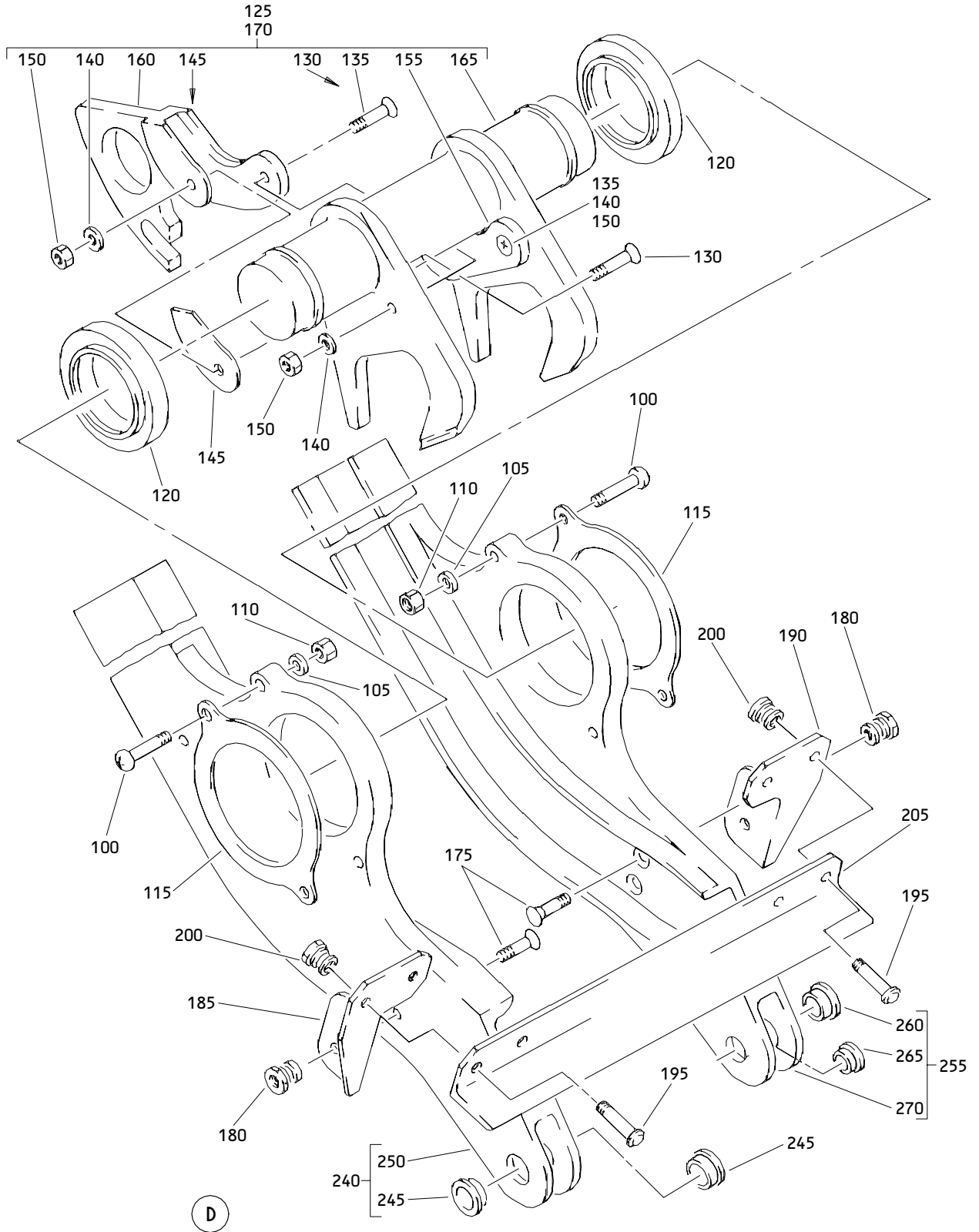
ILLUSTRATED PARTS LIST
01.1 Page 1029
Dec 01/95



Forward Entry and Service Door Track Assembly
Figure 2 (Sheet 3)

52-11-86

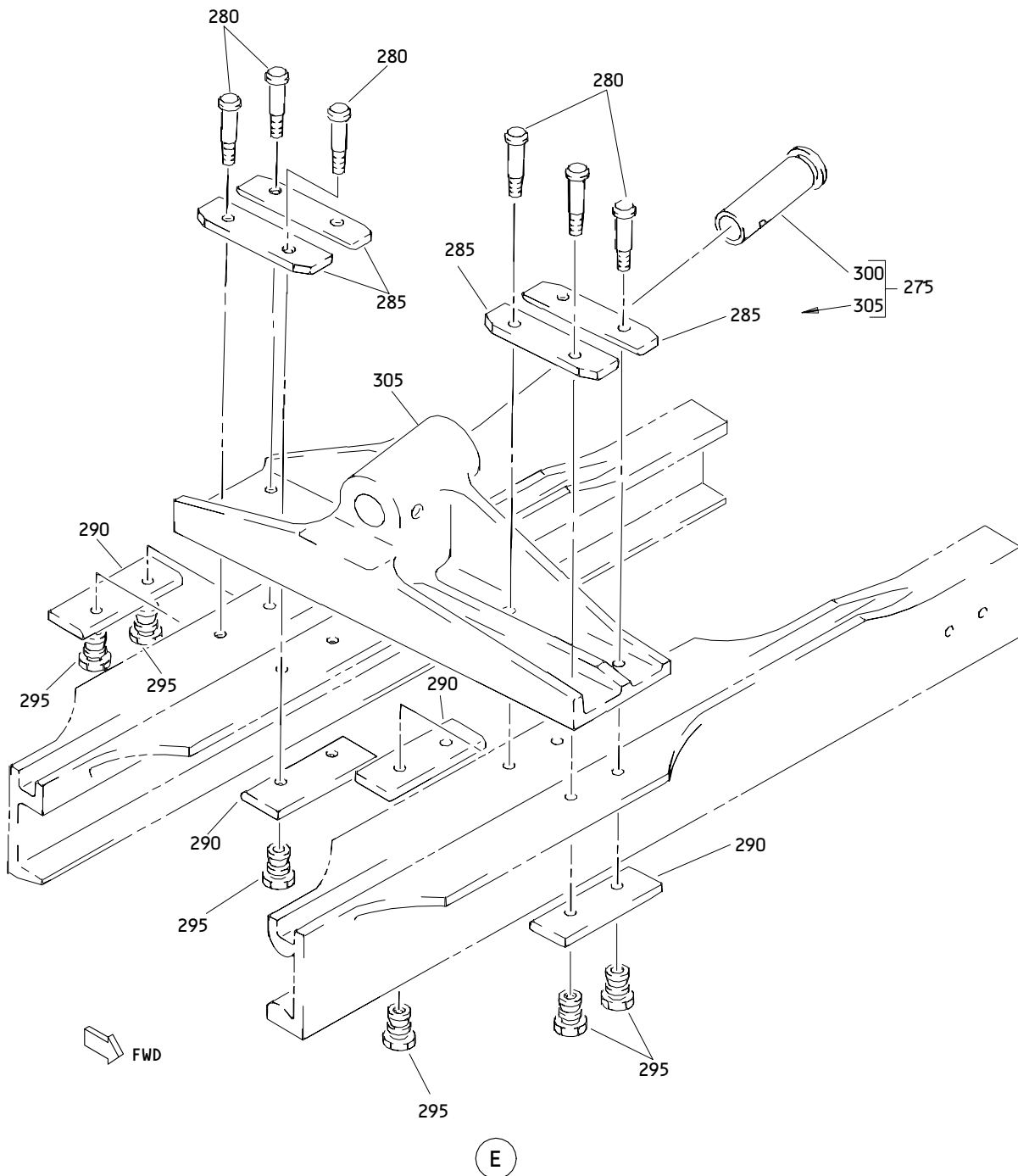
ILLUSTRATED PARTS LIST
01.1 Page 1030
Dec 01/95



Forward Entry and Service Door Track Assembly
 Figure 2 (Sheet 4)

52-11-86

ILLUSTRATED PARTS LIST
 01.1 Page 1031
 Dec 01/95



Forward Entry and Service Door Track Assembly
 Figure 2 (Sheet 5)

52-11-86

ILLUSTRATED PARTS LIST
 01.1 Page 1032
 Dec 01/95


BOEING
 COMPONENT
 MAINTENANCE MANUAL

FIG. & ITEM	PART NO.	AIRLINE PART NUMBER	NOMENCLATURE 1234567	EFF CODE	QTY PER ASSY
02- -1	141T6105-4		TRACK ASSY-FWD ENTRY AND SVCE DOOR	B	RF
-1A	141T6105-50		TRACK ASSY-FWD ENTRY AND SVCE DOOR	E	RF
5	HL12VAZ6-4		.BOLT- (V56878) (SPEC BACB30NX6K4) (OPT HL12VAZ6-4 (V73197)) (OPT HL12VAZ6-4 (V92215)) (OPT HL12VAZ6-4 (V97928)) (OPT L802-6K4 (V06725))	BE	10
10	HL12VAZ6-4		.BOLT- (V56878) (SPEC BACB30NX6K4) (REFER TO ITEM 5 FOR OPTIONAL PARTS)	B	12
15	HL1187-6		.COLLAR- (V73197) (SPEC BACC30X6) (OPT HL87-6 (V73197)) (OPT HL87-6 (V92215)) (OPT HL1187-6 (V56878)) (OPT HL1187-6 (V92215)) (OPT HL87-6 (V56878))	BE	10
20	HL1187-6		.COLLAR- (V73197) (SPEC BACC30X6) (REFER TO ITEM 15 FOR OPTIONAL PARTS)	B	12

52-11-86

ILLUSTRATED PARTS LIST

01

Page 1033

Oct 10/84

FIG. & ITEM	PART NO.	AIRLINE PART NUMBER	NOMENCLATURE 1234567	EFF CODE	QTY PER ASSY
02-					
25	146T6107-19		. STRINGER	BE	5
30	146T6107-19		. STRINGER	B	6
35	141T6105-37		. TRACK-AFT	B	1
-35A	141T6105-54		. TRACK-AFT	E	1
40	141T6105-39		. TRACK-FWD	B	1
-40A	141T6105-56		. TRACK-FWD	E	1
-45	141T6105-7004		. COLLECTOR-COMMON POINT	BE	1
50	141T6105-28		.. SPLICE ASSY	BE	1
			ATTACHING PARTS		
55	HL13VAZ10-6		.. BOLT-	BE	4
			(V56878)		
			(SPEC BACB30NY10K6)		
			(OPT HL13VAZ10-6		
			(V73197))		
			(OPT HL13VAZ10-6		
			(V92215))		
			(OPT HL13VAZ10-6		
			(V97928))		
			(OPT L801-10K6		
			(V06725))		
60	HL13VAZ10-7		.. BOLT-	BE	8
			(V56878)		
			(SPEC BACB30NY10K7)		
			(OPT HL13VAZ10-7		
			(V73197))		
			(OPT HL13VAZ10-7		
			(V92215))		
			(OPT HL13VAZ10-7		
			(V97928))		
			(OPT L801-10K7		
			(V06725))		

52-11-86

ILLUSTRATED PARTS LIST

01

Page 1034

Oct 10/84

BOEING
 COMPONENT
 MAINTENANCE MANUAL

FIG. & ITEM	PART NO.	AIRLINE PART NUMBER	NOMENCLATURE 1234567	EFF CODE	QTY PER ASSY
02-65	HL13VAZ10-9		..BOLT- (V56878) (SPEC BACB30NY10K9) (OPT HL13VAZ10-9 (V73197)) (OPT HL13VAZ10-9 (V92215)) (OPT HL13VAZ10-9 (V97928)) (OPT L801-10K9 (V06725))	BE	4
70	HL1187-10		..COLLAR- (V73197) (SPEC BACC30X10) (OPT HL87-10 (V73197)) (OPT HL87-10 (V92215)) (OPT HL1187-10 (V56878)) (OPT HL1187-10 (V92215)) (OPT HL87-10 (V56878))	BE	16
75	HL13VAZ6-4		-----*----- ...BOLT- (V56878) (SPEC BACB30NY6K4) (OPT HL13VAZ6-4 (V73197)) (OPT HL13VAZ6-4 (V92215)) (OPT HL13VAZ6-4 (V97928)) (OPT L801-6K4 (V06725))	BE	4

52-11-86

ILLUSTRATED PARTS LIST
 01 Page 1035
 Oct 10/84

FIG. & ITEM	PART NO.	AIRLINE PART NUMBER	NOMENCLATURE 1234567	EFF CODE	QTY PER ASSY
02-80	HL1187-6		...COLLAR- (V73197) (SPEC BACC30X6) (REFER TO ITEM 15 FOR OPTIONAL PARTS)	BE	4
85	146T6107-39		...STRINGER	BE	2
90	141T6238-1		...SPLICE	BE	1
95	141T6238-2		...SPLICE	BE	1
100	BACB30NT3K8		..BOLT- (V06710) (SPEC BACB30NT3K8) (OPT BACB30NT3K8 (V06725)) (OPT BACB30NT3K8 (V06950)) (OPT BACB30NT3K8 (V08524)) (OPT BACB30NT3K8 (V27624)) (OPT BACB30NT3K8 (V73197)) (OPT BACB30NT3K8 (V80539)) (OPT BACB30NT3K8 (V92215)) (OPT BACB30NT3K8 (V93907)) (OPT BACB30NT3K8 (V97928))	BE	4
105	AN960PD10L		..WASHER	BE	4

52-11-86

ILLUSTRATED PARTS LIST

01

Page 1036

Oct 10/84


BOEING
 COMPONENT
 MAINTENANCE MANUAL

FIG. & ITEM	PART NO.	AIRLINE PART NUMBER	NOMENCLATURE 1234567	EFF CODE	QTY PER ASSY
02-110	H10-3BAC		..NUT- (V15653) (SPEC BACN10JC3) (OPT NS202101-02 (V80539)) (OPT RMLH9075-3W (V72962)) (OPT T6S1032J (V71087)) (OPT VN303A02 (V92215)) (OPT 96-02 (V80539)) (OPT BRH10A3 (V52828))	BE	4
115	146T6107-63		..RETAINER-BRG	BE	2
120	BACB10EX23		..BEARING	BE	2
125	141T6549-2		..CAM ASSY-LATCH (OPT ITEM 170)	BE	1
130	BACB30LR4U10		...BOLT	BE	2
135	BACB30LH4U8		...BOLT	BE	2
140	AN960416L		...WASHER	BE	4
145	BACS40R07U08		...SHIM	BE	2
150	BR1110C4M		...NUT- (V52828) (SPEC BACN10JC4CM) (OPT H01-4BAC (V15653)) (OPT NS202101SE048 (V80539)) (OPT T6C428JM (V11815)) (OPT VN303D048 (V92215)) (OPT 109LH9075-4W (V72962)) (OPT 97E48 (V80539))	BE	4

52-11-86

ILLUSTRATED PARTS LIST

01

Page 1037

Oct 10/84

FIG. & ITEM	PART NO.	AIRLINE PART NUMBER	NOMENCLATURE 1234567	EFF CODE	QTY PER ASSY
02-					
155	141T6548-1		...STOP-TROLLEY	BE	1
160	141T6548-2		...STOP-TROLLEY	BE	1
165	141T6180-4		...LATCH	BE	1
170	141T6180-9		..LATCH-CAM (OPT ITEM 125)	BE	1
175	HL13VAZ5-5		..BOLT- (V56878) (SPEC BACB30NY5K5) (OPT HL13VAZ5-5 (V73197)) (OPT HL13VAZ5-5 (V92215)) (OPT HL13VAZ5-5 (V97928)) (OPT L801-5K5 (V06725))	BE	4
180	HL1187-5		..COLLAR- (V73197) (SPEC BACC30X5) (OPT HL87-5 (V73197)) (OPT HL87-5 (V92215)) (OPT HL86PB5 (V73197)) (OPT HL86PB5 (V56878)) (OPT HL86PB5 (V92215)) (OPT HL1187-5 (V56878)) (OPT HL1187-5 (V92215)) (OPT HL87-5 (V56878))	BE	4

52-11-86

 ILLUSTRATED PARTS LIST
 01 Page 1038
 Oct 10/84


BOEING
 COMPONENT
 MAINTENANCE MANUAL

FIG. & ITEM	PART NO.	AIRLINE PART NUMBER	NOMENCLATURE 1234567	EFF CODE	QTY PER ASSY
02-					
185	146T6107-21		..CLIP	BE	1
190	146T6107-22		..CLIP	BE	1
195	HL10VAZ6-4		..BOLT- (V56878) (SPEC BACB30MY6K4) (OPT B30MY6K4 (V97928)) (OPT HL10VAZ6-4 (V73197)) (OPT HL10VAZ6-4 (V92215)) (OPT HL10VAZ6-4 (V97928)) (OPT L8006K4 (V06725))	BE	4
200	HL79-6		..COLLAR- (V56878) (SPEC BACC30M6) (OPT HL79-6 (V73197)) (OPT HL79-6 (V92215)) (OPT 66014-6 (V56878))	BE	4
205	146T6107-23		..ANGLE	BE	1
207	146T6107-46		..SUPPORT-LWR	BE	1
210	146T6107-43		..FILLER	BE	1
215	HL13VAZ10-9		..BOLT- (V56878) (SPEC BACB30NY10K9) (REFER TO ITEM 65 FOR OPTIONAL PARTS)	BE	2
220	HL1187-10		..COLLAR- (V73197) (SPEC BACC30X10) (REFER TO ITEM 70 FOR OPTIONAL PARTS)	BE	2
225	146T6107-41		..FILLER	BE	2
230	146T6107-27		..CLIP	BE	1
235	146T6107-28		..CLIP	BE	1
240	141T6236-3		..TRACK ASSY	BE	1

52-11-86

ILLUSTRATED PARTS LIST

01.1

Page 1039

Dec 01/95

FIG. & ITEM	PART NO.	AIRLINE PART NUMBER	NOMENCLATURE 1234567	EFF CODE	QTY PER ASSY
02-245	BACB28AM07B013A		...BUSHING- (V23294) (SPEC BACB28AM07B013A) (OPT BACB28AM07B013A (V70265)) (OPT BACB28AM07B013A (V94892))	BE	2
250	141T6236-5		...TRACK	BE	1
255	141T6237-5		..TRACK ASSY	BE	1
260	BACB28AM07B013A		...BUSHING- (V23294) (SPEC BACB28AM07B013A) (REFER TO ITEM 245 FOR ADDITIONAL VENDORS)	BE	1
265	BACB28AP05P013		...BUSHING- (V23294) (SPEC BACB28AP05P013) (OPT BACB28AP05P013 (V70265)) (OPT BACB28AP05P013 (V94892))	BE	1
270	141T6237-4		...TRACK	BE	1
275	141T6593-15		DELETED		
275A	141T6593-13		DELETED		
275B	141T6593-21		..BRACKET ASSY- (OPT ITEM 275C)	BE	1
-275C	141T6593-19		..BRACKET ASSY- (OPT ITEM 275B) ATTACHING PARTS	BE	1
280	HL12VAZ8-10		..BOLT- (V56878) (SPEC BACB30NX8K10) (OPT HL12VAZ8-10 (V73197)) (OPT HL12VAZ8-10 (V92215)) (OPT HL12VAZ8-10 (V97928)) (OPT L802-8K10 (V06725))	BE	8

52-11-86

 ILLUSTRATED PARTS LIST
 01.101 Page 1040
 Apr 10/86


BOEING
 COMPONENT
 MAINTENANCE MANUAL

FIG. & ITEM	PART NO.	AIRLINE PART NUMBER	NOMENCLATURE 1234567	EFF CODE	QTY PER ASSY
02-					
285	146T6107-89		..FILLER	BE	4
290	146T6107-45		..FILLER	BE	4
295	HL1187-8		..COLLAR- (V73197) (SPEC BACC30X8) (OPT HL87-8 (V73197)) (OPT HL87-8 (V92215)) (OPT HL1187-8 (V56878)) (OPT HL1187-8 (V92215)) (OPT HL87-8 (V56878)) -----*	BE	8
300	BACB28AX8M165		...BUSHING	BE	1
305	141T6593-16		DELETED		
305A	141T6593-14		DELETED		
305B	141T6593-22		...BRACKET- (USED ON ITEM 275B)	BE	1
-305C	141T6593-20		...BRACKET- (USED ON ITEM 275C)	BE	1
310	BACB30NR4K6		..BOLT	BE	6
315	AN960PD416L		..WASHER	BE	6
320	BACN10JC4		..NUT	BE	6
325	BACS40R20C20F		..SHIM	BE	3

52-11-86

ILLUSTRATED PARTS LIST

01.1

Page 1041

Dec 01/95